



Introducing the new
Aerospray[®] Hematology Stat | series 2

SLIDE STAINER / CYTOCENTRIFUGE

STAT

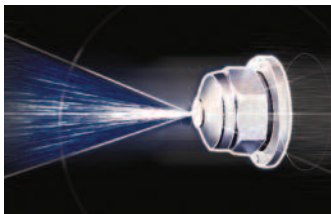


aqueous based

Delivering
textbook-quality staining with
trouble-free operation

Aerospray[®] Hematology Stat series 2

“The fastest and most economical hematology staining with the cleanest fields in the market”



■ ATOMIZED SPRAY

In all Aerospray[®] Stainers, fresh reagent is applied as an atomized spray on slides mounted in a rotating carousel. Specimens contact only fresh stain, precisely metered from separate spray nozzles. Accuracy is assured.

■ ECONOMICAL

The Aerospray Stat Stainer is exceptionally sparing when it comes to reagent consumption. Programmability significantly reduces the volume of reagents required for staining partial loads and thereby significantly lowers reagent cost.

■ RAPID PERFORMANCE

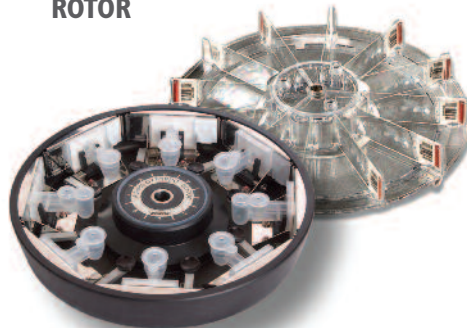
With a cycle time of 4 minutes, the Aerospray Stat Stainer is ideal for STATs, but with a throughput of more than 160 slides per hour, it handles heavy loads easily. In either case, slides emerge dry and ready for the microscope.

EASY TO USE

- Simply select the user-defined program and start the stain cycle. The stainer takes over from there, precisely controlling all phases of the stain cycle with virtually perfect reproducibility. Automated nozzle clean and purge after each stain cycle ensures performance without user intervention.



OPTIONAL CYTOCENTRIFUGE ROTOR



With the optional Cytopro[®] rotor, the Aerospray Stainer becomes a superb cytocentrifuge with eight-slide capacity and programmability, at a fraction of the cost of purchasing a stand-alone cytocentrifuge.

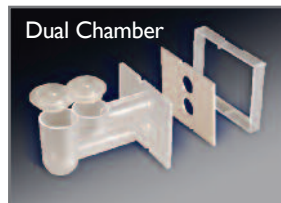
AVAILABLE SAMPLE CHAMBERS

Standard Chamber



Combines ease of use with superb cell recovery.

Dual Chamber



Places two samples on the same slide for increased efficiency and economy.

Cytopro Magnum[®]



Accepts sample sizes up to 6 mL.

The New series 2 Fulfills Today's Needs for Laboratories

UNMATCHED EASE OF USE:

Enjoy a friendly user interface with many innovative features at your disposal, such as large touch screen, language selection, help screens, nameable and recordable programs, and easy updates with the USB serial port.



EVERYTHING UNDER CONTROL:

Would you like to secure your settings with an administrator password? Do you want to be reminded to perform preventative maintenance or stain a QC slide?

Just program the stainer as you like and the system will remind you.

And don't worry about reagents and waste—the stainer alerts you to expired shelf life, or critical reagent or waste levels.



MORE TRACEABILITY:

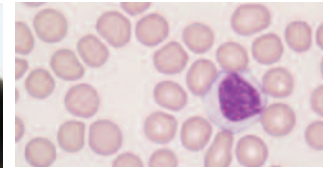
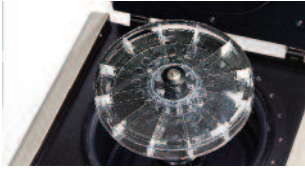
Need to reinforce your QC management and ensure compliance with new lab requirements?

The Aerospray Stat series 2 memory stores critical information including: reagent data, specimen ID, user ID, and cycle operation history—all exportable via a USB port.

The new barcode scanner streamlines data entry, while manual keyboard entry is still an option.

Ready for the Microscope in Minutes

Aerospray provides many advantages over hand staining or automated dip type stainers: speed, no cross contamination, consistent performance, economy, ease of use, and traceability.



The Aerospray Process for Hematology Staining

The Aerospray Hematology STAT Stainer stains specimens that have been transferred onto microscope slides along with materials such as blood, bone marrow and other body fluids. ELITech reagents are tailored to give FAST, ECONOMICAL and CLEAN results in the Aerospray STAT Stainer. Reagents are applied from atomizing spray nozzles onto the slides. Staining is rapid and precise. Only fresh stain contacts specimens avoiding cross-contamination or contact with used reagents.

THE STAINING CYCLE IN STEPS:

- Smears are automatically fixed with methanol or with Aerofix[®] fixative at the beginning of the staining cycle (alternatively, slides can be hand-fixed using methanol or Basofix[™]).
 - After a drying sequence, eosin stain is applied to stain acidophilic cell components, followed by a brief period for stain penetration. Thiazin dye is then applied to stain the basophilic cell components, followed by another brief stain penetration period.
- "Slides are exceptionally clean. The fields are literally free of precipitation or stain debris."*
- A buffered rinse cleans the slides of excess stain and is then removed by

centrifugation. Slides are dry and ready for the microscope at the end of the cycle.

THE ROMANOWSKY STAIN:

The Aerospray Stainer uses a two-part aqueous Romanowsky stain. Its principal advantages are:

- RAPID STAINING KINETICS: Blood smears are fixed, stained, and dried in about 4 minutes.
- IMPROVED STAIN STABILITY: The slow rate of decomposition of thiazin and eosin dyes in separate neutral aqueous solutions allows a long shelf-life. Since changes in the stains occur very slowly, staining results are highly reproducible and consistent.
- CLEAR FIELDS: Since there is virtually no stain precipitation or debris, slides are exceptionally clean.

BASOFIX:

With aqueous stains, basophil granules, which are water soluble, may be washed away in the staining process. With experience, degranulated basophils are readily recognized. For customers who prefer granulated basophils, ELITech offers Basofix fixative. This specially compounded formula yields stain coloration more reminiscent of alcohol-based stains. In addition to fixing basophil granules, primary granules are also strengthened.

USER PROGRAMMABILITY:

The Aerospray Stat Stainer is easily programmed. You have a choice of 10 intensity settings including 3 settings for bone marrow. The instrument is thus highly responsive to a wide range of staining requirements, and individual preferences can be named and saved through the new touchscreen interface.

The Aerospray Hematology Stat Slide Stainer/Cytocentrifuge combines ELITech's advanced staining technology with the advantage of aqueous-based staining routines. With its rapid staining cycle and high throughput capability, the Aerospray Hematology Stat Stainer is a convenient, cost-effective way to screen Hematology specimens.

Delivering Textbook-Quality Staining with Trouble-Free Operation

Textbook Stain Quality

- ✓ Fast and precise
- ✓ Proven consistency & repeatability
- ✓ Clean, readable slides
- ✓ Virtually no chance for cross-contamination
- ✓ Customizable & standardized to staining preference
- ✓ Automates exceptional specimens (e.g. bone marrow)

Trouble-Free Operations

- ✓ Robust & reliable
- ✓ State-of-the-art user interface with traceability
- ✓ Simple, prompted maintenance
- ✓ Stained slides ready for the microscope in minutes

Higher Value Solution

- ✓ Dual-purpose stainer/cytocentrifuge
- ✓ Laboratory technician safety through automation
- ✓ Automatic waste level detection
- ✓ Labor-saving automation

Specifications

Aerospray® Hematology Stat Slide Stainer/Cytocentrifuge Model 7122

| | |
|-----------------------------|--|
| Slide Carousel Capacity | 1 to 12 |
| Cytocentrifuge Rotor Speed | 100-2000 rpm (± 5%), user programmable |
| Dimensions (W x H x D) | 57 cm x 25 cm x 54 cm (22" x 10" x 21") |
| Clearance Height (lid open) | 58 cm (23") |
| Weight | 15.2 kg (33.5 lb) |
| Electrical Requirements | 100 to 240 VAC (±10%), @ 50-60 Hz, 200 watts maximum |
| Drain Connection | Outlet on rear panel |
| Safety | Lid interlock: lid must be closed for operation, and is locked down during carousel rotation |
| Reagent Level Detect | Level detection on all reagent lines |
| Waste Level Detect | Level detection in waste bottle |

Aerospray® Hematology Stat Stain Consumption Specifications

| Medium Dark Setting: #5 | | Theoretical maximum number of slides per bottle | |
|-------------------------|--------------------|---|----------------|
| | | Full 12 Slide Carousel | |
| Reagents | Description | 1 Clean Cycle daily | No Clean Cycle |
| Buffered Rinse 500 mL | | 792 | 996 |
| Thiazin 500 mL | | 792 | 996 |
| Eosin 500 mL | | 792 | 996 |
| Fixative 500 mL | Aerofix®, Methanol | 540 | 4200 |

Cytopro® Cytocentrifuge Rotor Model AC-I60

| | |
|-----------------------|--------------------------------|
| Capacity | 8 chambers and slides |
| Weight | 1.1 kg (2.5 lb) |
| Dimensions (Dia. x H) | 22.6 cm x 6.2 cm (8.9" x 2.4") |



© ELITechGroup 2013
PRINTED USA

60-0037-01A
STAT.JUL13-9

Please contact your sales representative for product availability in your country.

WORLDWIDE OFFICES

Headquarters T: +33 1 41 45 07 13
Australia T: +61 1800 815 098
Benelux T: +31 313 430 574
Brazil T: +55 27 3025 1415
France T: +33 4 83 36 10 82
Italy T: +39 02 48 40 35 42
Middle East & Africa T: +971 4 375 2744

New Zealand T: +64 800 555 611
Serbia T: +381 11 2467119
Switzerland T: +41 26 663 86 60
The Netherlands T: +31 313 430574
UK T: +44 1442 869320
United States T: +1 435 752 6011

