



Introducing the new  
**Aerospray<sup>®</sup>TB series2**

SLIDE STAINER / CYTOCENTRIFUGE

TB



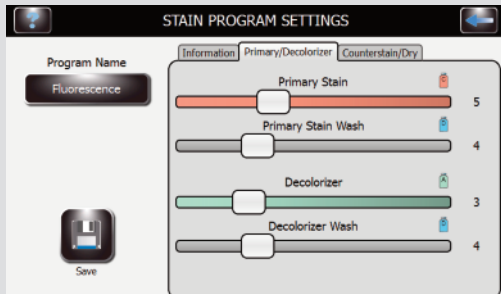
Delivering textbook-quality staining  
with trouble-free operation

# Aerospray<sup>®</sup> TB | series 2

"Bringing the ground-breaking value of Aerospray<sup>®</sup> technology to TB staining"

## Dramatic Improvements in automating TB Staining

- With its new Series 2, ELITech has significantly increased the flexibility in order to optimize for various TB staining approaches across the world.



TB Programming Menu

- International studies have demonstrated HD quality staining\* equivalent to several conventional manual approaches as shown:

	Primary stain	Counterstain	Verified
Carbol Fuchsin	Fuchsin (ELITe ZN)	Methylene Blue	✓
	Fuchsin (ELITe ZN)	Brilliant Green	✓
Fluorescence	Auramine	Red Thiazin	✓
		Potassium Permanganate	✓
	Auramine Rhodamine	Potassium Permanganate	✓

\*Slide staining does not provide 100% specific diagnostic information for TB disease.

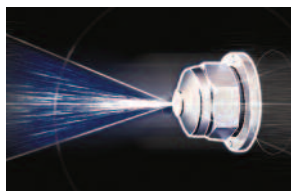
## Ground-Breaking Series2 Capabilities

- Unmatched ease of use** with touch screen programmability, help screens, languages, and USB loadable updates.

Everything under control with multiple levels of administrative passwords, QC and maintenance reminders, and alerts for expiring or low reagents, or high waste levels.



- More Traceability** with on-board memory and exportable data including date/time, reagent Lot, user and specimen ID, and cycle operation history. The system also includes bar-code data entry to further assure error-free operation.



## NO CROSS-CONTAMINATION

In all Aerospray<sup>®</sup> Stainers, fresh reagent is applied as an atomized spray on slides mounted in a rotating carousel. Specimens contact only fresh stain, precisely metered from separate spray nozzles. No cross-contamination occurs and accuracy is assured.

## ECONOMICAL

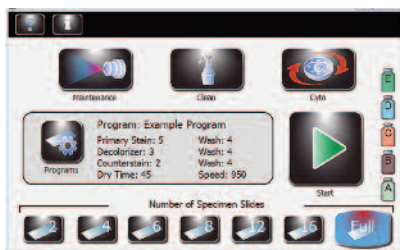
The Aerospray TB Stainer is exceptionally sparing when it comes to reagent consumption. Programmability significantly reduces the volume of reagents required for staining partial loads and thereby significantly lowers reagent cost.

## RAPID PERFORMANCE

With a cycle time as short as 4.5 minutes, the Aerospray TB Stainer can process more than 150 slides per hour (up to 400 with the optional 30-slide carousel). No more waiting for slides to dry—they're ready to view when the staining cycle ends.

## EASY TO USE

Simply select the user-defined program and start the stain cycle. The stainer takes over from there, precisely controlling all phases of the stain cycle with virtually perfect reproducibility. Automated nozzle clean and purge after each stain cycle ensures performance without user intervention.



## OPTIONAL CYTOCENTRIFUGE ROTOR



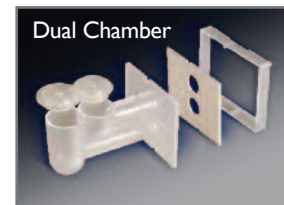
With the optional Cytopro<sup>®</sup> Rotor, the Aerospray Stainer becomes a superb cytocentrifuge with eight-slide capacity and programmability, at a fraction of the cost of a stand-alone cytocentrifuge.

## AVAILABLE SAMPLE CHAMBERS



Standard Chamber

Combines ease of use with superb cell recovery.



Dual Chamber

Places two samples on the same slide for increased efficiency and economy.



Cytopro Magnum<sup>®</sup>

Accepts sample sizes up to 6 mL.

# Ready for the Microscope in Minutes

Aerospray provides many advantages over hand staining or automated dip type stainers: speed, no cross-contamination, consistent performance, economy, ease of use, and traceability.

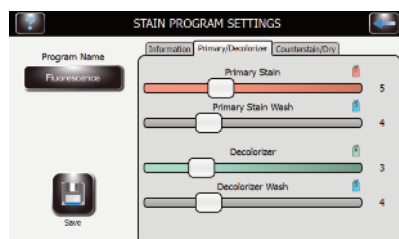
## The Aerospray Process for TB Staining

The Aerospray TB Stainer stains microbial specimens that have been transferred onto microscope slides along with materials such as digested sputums, culture media, body fluids, or exudates. ELITechGroup TB reagents are tailored to give superb results in the Aerospray Stainer. The Aerospray TB stainer provides a wide range of staining settings with many possible variables, allowing you to adjust staining as you like for different types of specimens.

### HOW IT WORKS:

Reagents are applied from atomizing spray nozzles onto the slides. Staining is rapid and precise. Only fresh stain contacts specimens avoiding cross-contamination or contact with used reagents.

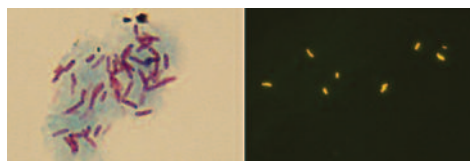
### SUPERIOR STAINING FLEXIBILITY:



TB Programming Menu

Aerospray TB gives users the ability to adjust the exact amount of each reagent applied to each slide. Primary Stain, Decolorizer, Counterstain, Washes can be adjusted independently to tailor the staining to individual preferences and to various approaches.

### CARBOL FUCHSIN OR FLUORESCENCE STAINING ON DEMAND:



ELITE ZN staining & Fluorescence staining

With a few keystrokes and a change of reagents the TB stainer can be configured either for staining like Ziehl-Neelsen (**ELITE ZN technology**) without the inconvenience of the dangerous fumes linked to the traditional heating phase, but also for auramine or auramine/rhodamine staining methods.

### FIXATION:

Specimens are heat fixed according to traditional procedures prior to staining in the Aerospray.

### PRIMARY STAIN:

At the beginning of the staining cycle, the slides are sprayed with the primary stain

(carbol fuchsin or fluorochrome) that penetrates and stains the specimens. Excess stain is then spun off and washed away with deionized water to prevent precipitate formation.

### DECOLORIZING:

Acid alcohol decolorizer is then applied to remove the primary stain from the non acid-fast bacteria and surrounding debris. The decolorization is stopped with a water wash and a short spin.

### COUNTERSTAIN:

The counterstain (either Potassium Permanganate or Red Thiazin) is then applied to stain the non-acid-fast organisms. Excess counterstain is then removed with a water wash and a short spin.

### DRYING:

The slides are spun at about 950 RPM for 45 seconds. This draws air through the stainer and dries the slides. Slides emerge from the stainer dry and ready for the microscope.

With its rapid staining cycle and high-throughput capability, the Aerospray TB stainer is a convenient, cost-effective way to stain mycobacteria.

## Delivering Textbook-Quality Staining with Trouble-Free Operation

### Textbook Stain Quality

- ✓ HD Morphology
- ✓ Proven consistency & repeatability
- ✓ Clean, readable slides
- ✓ Virtually no chance for cross-contamination
- ✓ Customizable & standardized to staining preference
- ✓ Large menu of reagents to meet local requirements

### Trouble-Free Operation

- ✓ Robust & reliable
- ✓ State-of-the-art user interface with traceability
- ✓ Simple, prompted maintenance
- ✓ Stained slides ready for the microscope in minutes

### Higher Value Solution

- ✓ Dual-purpose stainer/cytoprifuge
- ✓ Laboratory technician safety through automation
- ✓ Automatic waste level detection
- ✓ Labor-saving automation
- ✓ Economical reagent use



# Specifications

## Aerospray® TB Slide Stainer/Cytopro Model 7722

Slide Carousel Capacity	1 to 12 or 1 to 30 Slides, depending on carousel
Cytopro Rotor Speed	100-2000 rpm ( $\pm$ 5% accuracy), user programmable
Dimensions (W x H x D)	57 cm x 25 cm x 54 cm (22" x 10" x 21")
Clearance Height (lid open)	58 cm (23")
Weight	15.6 kg (34.4 lb)
Electrical Requirements	100 to 240 VAC, @ 50-60 Hz, 200 watts maximum
Drain Connection	Outlet on rear panel
Safety	Lid interlock: lid must be closed for operation, and is locked down during carousel rotation.
Reagent Level Detect	Level detection on all reagent lines
Waste Level Detect	Level detection in waste bottle

## Aerospray® TB Stain Consumption Specifications

Reagents	Description	Typical number of slides per bottle			
		Full 12 Slide Carousel		Full 30 Slide Carousel	
		Carbol Fuchsin	Fluorescence	Carbol Fuchsin	Fluorescence
Decolorizer 500 mL	Carbol Fuchsin Decolorizer	1000 (5)*	1333 (3)*	2150 (5)*	1666 (5)*
	Fluorescence Decolorizer				
Counterstain 500 mL	Brilliant Green				
	Methylene Blue	685 (6)*	1411 (2)*	923 (6)*	2068 (2)*
	Potassium Permanganate				
	Thiazin Red /Carbol Solution				
Primary Stain 500 mL	ELITe ZN				
	Auramine	406 (4)*	685 (2)*	530 (4)*	923 (2)*
	Auramine /Rhodamine				

\* Programmed reagent settings

## Cytopro® Cytopro Rotor Model AC-160

Capacity	8 chambers and slides
Weight	1.1 kg (2.5 lb)
Dimensions (Dia. x H)	22.6 cm x 6.2 cm (8.9" x 2.4")



© ELITechGroup 2014  
PRINTED USA

60-0039-01A  
TB.FEB14-15

Please contact your sales representative for product availability in your country.

### WORLDWIDE OFFICES

**Headquarters** T: +33 1 41 45 07 13  
**Australia** T: +61 1800 815 098  
**Benelux** T: +31 313 430 574  
**Brazil** T: +55 27 3025 1415  
**France** T: +33 4 83 36 10 82  
**Italy** T: +39 02 48 40 35 42  
**Middle East & Africa** T: +971 4 375 2744

**New Zealand** T: +64 800 555 611  
**Serbia** T: +381 11 2467119  
**Switzerland** T: +41 26 663 86 60  
**The Netherlands** T: +31 313 430574  
**UK** T: +44 1442 869320  
**United States** T: +1 435 752 6011



**ELITechGroup**  
 SOLUTIONS  
*tailored to your needs*  
[www.elitechgroup.com](http://www.elitechgroup.com)  
[info@elitechgroup.com](mailto:info@elitechgroup.com)