



ANATOMY & UNIVERSITY LAB

Solutions

DISSECTION TABLES

Reliable, affordable workstations
manufactured in the United States

CADAVER HANDLING & STORAGE

Quality cooler configurations and body transfer
systems to maximize workspace and safety



www.mopec.com



(800) 362-8491



info@mopec.com

Innovative Lab Designs to Enhance Education

Mopec's anatomy lab product offering delivers industry-leading features to support workspace efficiency and safety. Mopec designed tables, lifts, racks, sinks and coolers integrate seamlessly to increase ergonomics and reduce user injuries. Our knowledgeable engineers are experienced with ensuring any new additions are adaptable for use with existing equipment.





INDEX

STANDARD TABLES	3-4
COVERED TABLES	5-6
REMOVABLE TRAY TABLES	7-8
DIP TANK TABLES	9
TABLE ACCESSORIES	10
AUTOPSY & EMBALMING SINKS	11-12
CADAVER LIFTS	13-14
MORTUARY RACKS	15-16
CADAVER COOLERS	17-18

STANDARD DISSECTION TABLES



Mopec dissection tables offer an economical, yet high-quality solution to university lab needs. Equipped with casters, the tables are easily maneuverable should classes require a different room layout. The stainless steel construction allows for easy cleaning and a heavy-duty work surface. Each table is designed with a sloped top toward a ball valve and tube to ensure proper drainage during dissection. With Mopec's assortment of accessories, students are prepared with the tools needed to succeed.

Standard Features

- All stainless steel construction
- Sturdy, non-removable top
- Built-in slope or tapered crease for adequate drainage
- Drain hole and PVC valve
- Four heavy duty 5" casters with (3) total lock and (1) directional lock
- (4) Post sockets for optional added accessories
- Weight capacity of 350 lbs



Accessories

Accessories can be selected at time of purchase or added on at a later date.
SEE PAGE 10 FOR DETAILS

OPTIONS

Top Edge Type

Recessed edges allow for use of a larger range of additional accessories. Creased edges promote easier transfer of bodies on and off the table.

RECESSED



CREASED



Post Socket >

Drawers

Three stainless steel drawers can be added under the table top for additional storage space.



COVERED DISSECTION TABLES

Mopec Covered Dissection Tables feature a recessed top that eliminates the need for a body tray. The two hinged covers allow for securely concealing the cadaver when not in use. During the dissection, the covers neatly lock under the table. Ventilation is available for added student safety.



Easy open and close mechanism

Mopec-Exclusive Lid Assist Feature

Covered dissection tables are equipped with a one-handed opening and closing mechanism. This allows the user to easily adjust the covers without causing injury.



Accessories

Accessories can be selected at time of purchase or added on at a later date.
SEE PAGE 10 FOR DETAILS

Standard Features

- All stainless steel construction
- Hinged cover with swing latches to hold open when in use
- Sturdy, non-removable recessed top
- Downdraft models feature a removable perforated grid plate
- Four heavy duty 5" casters with (3) total lock and (1) directional lock
- (4) Post sockets for optional accessories
- Drain hole and PVC valve
- Weight capacity of 350 lbs
- Dimensions: 86" L x 30" W x sloped 36-35" H with elevation model min. 32-31" H and max 43-42" H

OPTIONS

Ventilation

Models equipped with the downdraft ventilation system ensure ultimate student safety. The constant air flow removes formalin vapors down and away from the user.



VENTILATED



NON-VENTILATED



Elevation

For added customization, hand crank elevation is available on covered tables. This allows for quick adjustment for students of varying heights.

REMOVABLE TRAY DISSECTION TABLES

Mopec Removable Tray Dissection Tables are ideal for facilities looking for an extremely efficient means of transferring bodies from tables to storage racks. The body tray easily glides off the chassis rollers onto a carrier, lift or rack. It eliminates the need for an additional tray in the storage area.



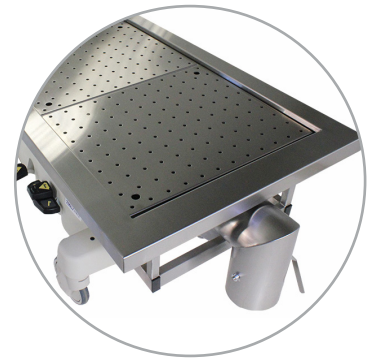
Standard Features

- All stainless steel construction
- Conveyor rust-free roller transfer top
- Removable 27" Body Tray (JC027D)
- Sloped frame for easy drainage
- Drain hole and PVC valve
- Four heavy duty 5" casters with (3) total lock and (1) directional lock
- (4) Post sockets for optional added accessories
- Lower shelf for storage
- 2.5 Gallon carboy and carboy holder
- Weight capacity of 350 lbs
- Dimensions: 86" L x 30.2" W x sloped 35.8 - 34.4" H



Standard Features

- Stainless steel top construction
- Twin pedestal hydraulics for easy foot activated elevation
- Elevation range of 12.75"
- Brake lever on both sides and one end
- Four heavy duty 8" casters with total lock
- Lower shelf for storage
- Weight capacity of 500 lbs



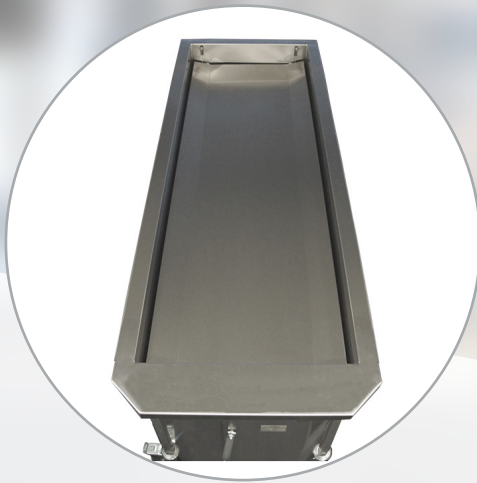
Customizable Top

Stainless steel tops can be customized to suit your specific lab needs. Options include creased or recessed, conveyor and ventilation.

Mopec Hydraulic Tables are some of the most advanced tables offered on the market. They feature hydraulic elevation, easy tilting and foot pedal controls to reduce common user strains caused by moving cadavers.

DIP TANK DISSECTION TABLES

Designed to keep cadavers and anatomic specimens fully submerged in a fixative solution for prolonged storage. Ideal for anatomy classes at teaching hospitals and universities. The tank helps maintain moisture content and the natural condition of stored tissues. Mopec exclusive features include an ergonomic hand crank, magnetic lid latching and tray leveling holes.



Standard Features

- All stainless steel construction
- Ergonomically placed hand crank for easier and safer elevation
- Magnetic latches to secure cover lids
- Holes in tray for leveled specimen during submersion
- Flanged hole in tray for drain access and cleaning
- Four heavy duty 5" casters for easier transporting
- Weight capacity of 300 lbs
- Max fluid capacity of 120 gallons
- 96" L x 32.6" W x 38" H
- Interior width for cadaver: 27"



Table Accessories to

Enhance the Learning Environment

Mopec offers an assortment of options to provide additional benefits to your dissection table. Have something in mind that we don't currently sell? Chat with your friendly representative! Mopec engineers are skilled in customizing accessories to fit your specific lab needs.

Under the Table

Compatible with all standard, non-elevating tables

- Bucket (BA005)
- Bucket Holder (HO003)
- Lower Fixed Stainless Steel Shelf (HO024)



Post Style

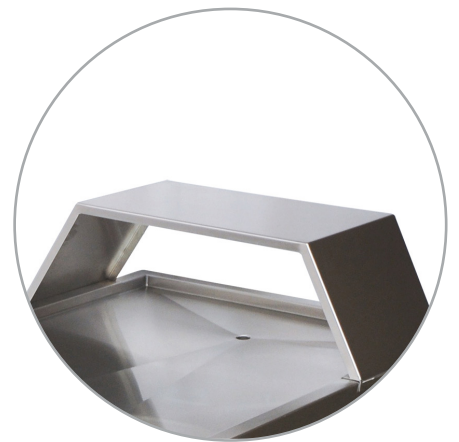
Compatible with all tables, except hydraulic base tables

- Post Style Book Holder (HO006)
- Post Style Instrument Tray Holder (HO030)
- Post Style Leg Rest (HO005)

Bridge Style

Compatible with recessed top tables

- Bridge Style Leg Rest (HO001)
- Bridge Style Book Stand (HO002 & HO021)



AUTOPSY & EMBALMING SINKS

Mopec Autopsy & Embalming Sinks can be customized to suit the needs of your lab. Sinks can be laid out with a center, right or left hand approach sink. Dual sinks may also be utilized for handling multiple dissection or embalming cases simultaneously. A patented elevating system is only available on Mopec sinks. This feature allows for quick adjustments for professionals of varying heights.



Model CC200

Standard Features

- All stainless steel construction
- Integral sink construction eliminating any overlapping edges to create a sanitary workspace
- Hot and cold water fixtures with wrist blade handles and goose neck spouts with vacuum breaker protection
- Hand spray assembly with heavy duty brass chrome plated hand piece
- GFCI duplex electrical receptacle with water resistant cover
- Hydro-aspirator with control valve, reverse flow feature and tubing

Accessories

Additional add-on features are available for enhanced efficiency. Ask your Mopec representative for more information.



Model	CA100	CB100	CC100	CA200	CB200	CC200	CC300
Sink Approach	Right	Left	Center	Right	Left	Center	Dual
Elevating	No	No	No	Yes	Yes	Yes	No



Visit mopec.com for Mopec's selection of dissection surgical lighting.



Model CH100



Model CE800



Model FD200

Service Sinks

Auxiliary sinks are essential for a clean and orderly lab. They serve as a designated location for a specific embalming task or for hand and instrument washing.

NON-ELEVATING CENTER SINK

EMBALMING SINK & CART



Model CC100



Model CF200 & CF400

RED WING CADAVER LIFTS

Mopec's experienced engineers developed the Red Wing Cadaver Lifts with leading-edge features including a sturdy balanced frame that outperforms any cadaver lift in the industry. The unique adjustable lift top provides maximum flexibility of tray types and leading approach.

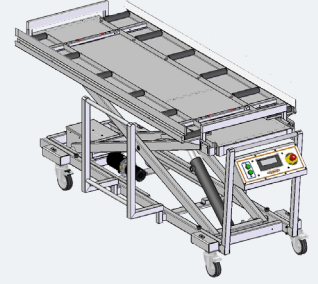
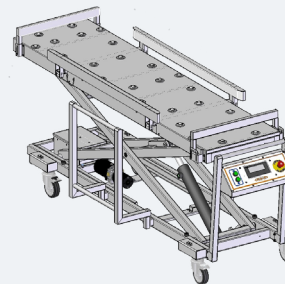
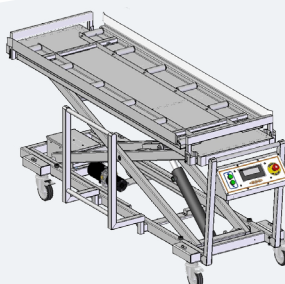
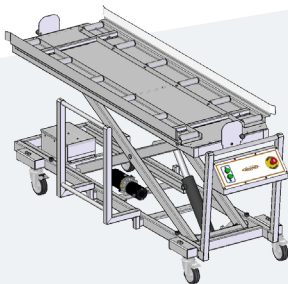
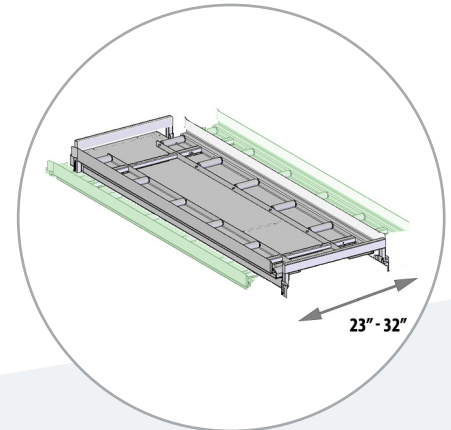


Model JD501

Standard Features

- Mopec Exclusive Feature: Adjustable side rails to accommodate body trays ranging from 23" to 32"
- Single scissor operation for ultimate sturdiness and balanced weight
- Powder-coated steel for easy cleaning
- Fixed front handle & removable side handle
- Four locking swivel casters with steering functionality in two
- Hydraulic operation
- Weight capacity of 800 lbs.
- 12 VDC sealed deep cycle batteries
- Single cord charger with status indicator (110/220 V)
- Handle control console
- Emergency OFF switch with key lock
- Digital scale integrated in console (except JD301)
- Drain plug compatible
- Works with most mortuary trays, racks, carriers and carts





Model	JD301	JD501	JD5000	JD5001
Tier Height	3	5	5	5
Tray Access	End	End	End or Side	End
Roller Type	Split	Split	Roller	Split
23" Tray	X	X	X	X
24" Tray	X	X	X	X
27" Tray	X	X	X	X
30" Tray			X	X
32" GA Tray				X
Scale		X	X	X
Dimensions	91.8" L x 29.2" W	95.2" L x 29.2" W	95.2" L x 29.2 - 33.2" W*	95.2" L x 34.4" W
Elevating Range	13.4" – 55.6"	13.4" – 76.8"	13.3" – 76.7"	13.4" – 76.8"

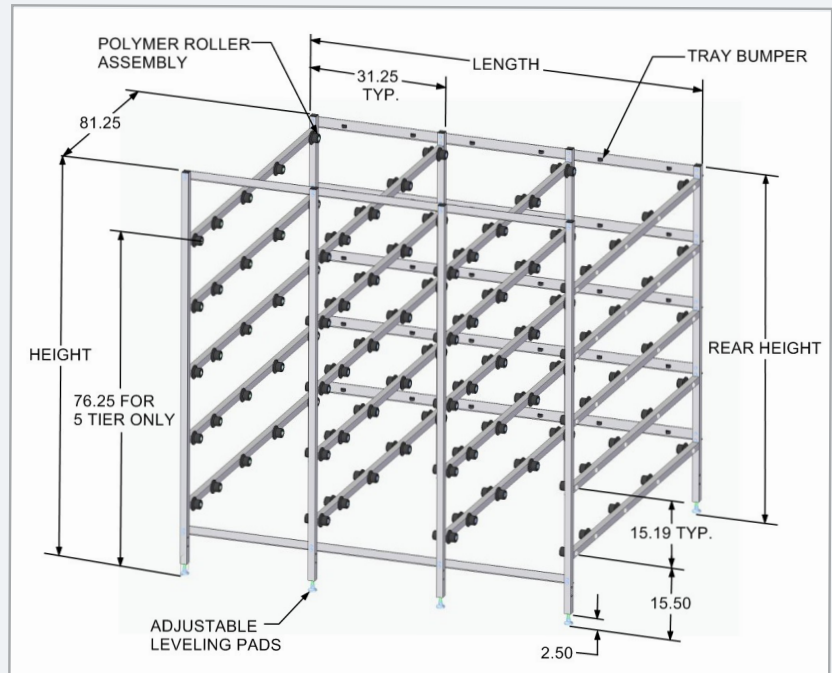
ROLLER MORTUARY RACKS

Mopec's mortuary racks are an economical and efficient means of mass cadaver storage. They can be customized to accommodate any number of bodies. Each section is of modular construction and is self-supporting. The unit is designed for on-site assembly, so no welding is required.

IE Series

Standard Features

- All stainless steel construction
- Nylon roller wheel assembly
- Modular construction
- (2) Body tray bumpers per bay
- Includes (1) body tray per bay
- Heavy duty adjustable levelling pads
- **Optional:** Seismic anchoring kit
- **Approximate Weight Capacity:**
23" & 27": 375 lbs per bay
32": 500 lbs per bay
- **Compatibility:**
Mopec Red Wing Lifts
Forklifts (JD710, JD305, JD405)
with Roller Pallet (JD420)





Dimensions for 23" & 27" Tray Racks:

# OF TIERS	FRONT HEIGHT	REAR HEIGHT	DEPTH	WIDTH
1	32.0"	19.0"	81.3"	23": FOR (1) BAY: 27.75"
2	47.2"	34.1"	81.3"	FOR (1+) BAY:
3	62.4"	49.4"	81.3"	$((27.75) \times (\# \text{ OF BAYS})) + 1.5$
4	77.6"	64.6"	81.3"	
5	92.7"	79.7"	81.3"	27": FOR (1) BAY: 31.25"
				FOR (1+) BAY:
				$((31.25) \times (\# \text{ OF BAYS})) + 1.5$

Dimensions for 32" Tray Racks:

# OF TIERS	FRONT HEIGHT	REAR HEIGHT	DEPTH	WIDTH
1	36.4"	21.4"	84.3"	FOR (1) BAY: 36.25"
2	54.3"	39.3"	84.3"	FOR (1+) BAY:
3	72.2"	57.2"	84.3"	$((34.75) \times (\# \text{ OF BAYS})) + 1.5$
4	90.1"	75.1"	84.3"	

CADAVER REFRIGERATION

Mopec body coolers and freezers are intelligently designed from the inside out. To prevent ozone depletion, all insulation foam is CFC free and environmentally responsible. The evaporator and ventilated compressor allow for greatly reduced noise during operation. The frameless panel construction offers exceptional sturdiness and provides an easy to maintain surface.

Standard Features

- Easy-to-use self-contained system
- Simple to install
- LED lighting for energy efficiency
- Magnetic door gasket with heated frame
- Digital temperature display (C. or F.) with battery backup and touch technology
- Adjustable hinges with built-in spring action
- Interior release latches in the event of accidental enclosure

Tray Transfer Options

Mopec offers two variations of transfer systems within the cooler: conveyor and telescoping. Conveyor systems are permanently installed within the cooler. When moving the body from the cooler, a coordinating conveyor lift must be used to roll the body out. Telescoping systems fully support the body when pulling the tray out from the cooler. This allows for viewing around the cadaver. However, telescoping systems require more facility space.

CONVEYOR



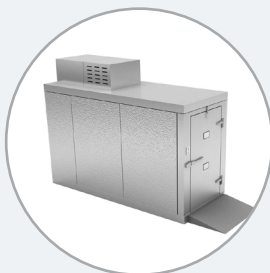
TELESCOPING



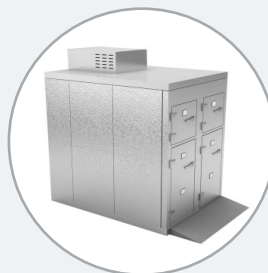
END OPENING



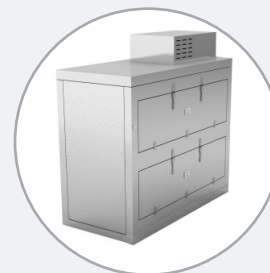
ROLL IN



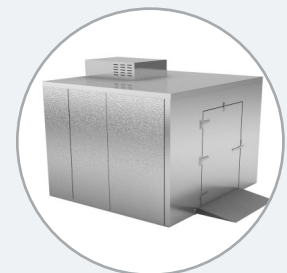
COMBO



SIDE OPENING



WALK-IN





Digital Temp Display

Finish Options

Mopec coolers are available in two finish options: stainless steel and Sanisteel® antimicrobial. The Sanisteel® coating is proven to be effective in preventing and fighting more than 650 bacteria strains.

Custom Sizing

Coolers can be built to suit any body number requirement. Our engineers are experienced in cold room layouts for unique space constraints, and our representatives will ensure your cooler is optimized to work with any current equipment including racks, lifts and carts.

SPACIOUS STAINLESS STEEL WALK-IN



COMBO SYSTEM WITH BARIATRIC OPTION



CONVEYOR SYSTEM & EASY CLEAN FINISH



Mopec Proudly Served Industries:

- Medical Examiner Facilities
- Pathology Laboratories
- Animal Research Facilities
- Anatomy Laboratories
- Funeral Homes
- Crematoriums

Why choose Mopec?



COMPATIBILITY

Mopec equipment is compatible with most other commercial equipment, coolers and cadaver racks. See your Mopec representative for details.

QUALITY CONSTRUCTION

Each order is thoroughly tested and rigorously inspected against top-notch quality standards. Every Mopec manufactured product is issued with a standard one year warranty.

OPTIONAL CUSTOMIZATION

Mopec understands that every facility is unique. Our customer service and sales representative teams are knowledgeable in common facility challenges and can assist in customizing your equipment.

Made in the United States

Worldwide Shipping

Over 25 Years of Experience



www.mopec.com
(800) 362-8491
info@mopec.com