

MCO-170AICUVL-PA

cellIQ™

CO₂ Incubator

5.8 cu.ft. | 165 L



MCO-170AICUVL-PA



The CO₂ incubator design with touchscreen panel delivers exceptional ease of use, effortless cleaning and maintenance as well as outstanding performance with multilevel contamination control.

Precise and Repeatable Environment

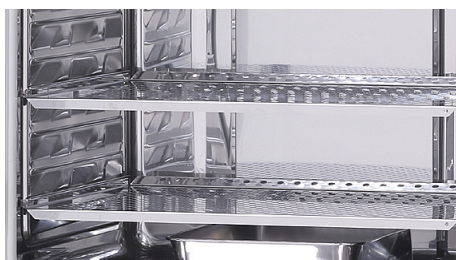
The patented Direct Heat and Air Jacket system works with the IR2 sensor to provide precise temperature and CO₂ levels, respectively. InCu-saFe® and SafeCell™ UV function together to prevent contamination.

Time-Saving Decontamination

The optional high speed decontamination system uses hydrogen peroxide (H₂O₂) vapor to safely clean the chamber in less than three hours while providing a kill rate with at least a six log reduction of major contaminants.

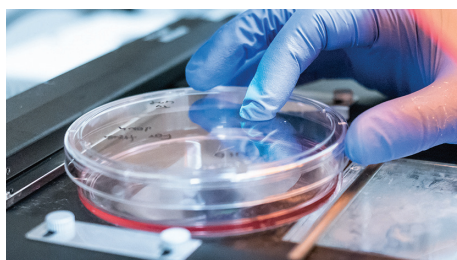
Improved Use and Maintenance

A color LCD touchscreen delivers full control, even with gloved hands, while a standard USB port makes log data transfer to PC convenient. The CO₂ incubator offers integrated shelf channels with minimal parts for easy cleaning.



Germicidal Interior

InCu-saFe copper enriched, stainless steel alloy offers germicidal properties of elemental copper without corrosion or discoloration.



Contamination Control

The isolated UV lamp decontaminates circulated air and the humidity water reservoir without harming the cultured cells.



Intuitive Control

The control panel interface allows for easy programming of temperature, CO₂ and other internal conditions of your incubator.

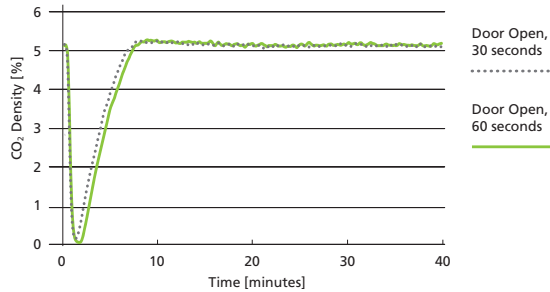


Model MCO-170AICUVL-PA

Direct Heat and Air Jacket System

Accurate temperature levels are regulated by the Direct Heat and Air Jacket system which functions under microprocessor control.

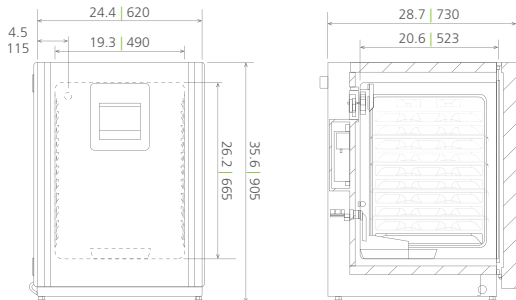
Direct Heat and Air Jacket System




Proprietary IR2 sensor achieves ultrafast CO₂ recovery without overshoot, even following multiple door openings.

Dimensions

Unit : inch | mm



Model Number		MCO-170AICUVL-PA	With Optional H ₂ O ₂ Decontamination	
External Dimensions (W x D x H) ¹⁾	inches mm	24.4 x 28.7 x 35.6 620 x 730 x 905		
Internal Dimensions (W x D x H)	inches mm	19.3 x 20.6 x 26.2 490 x 523 x 665		
Volume	cu.ft. liters	5.8 165		
Net Weight	lbs kg	176 80		
Performance				
Warranty ²⁾		3 years parts and labor, 5 years CO ₂ sensor		
Temperature Control Range and Fluctuation ³⁾	°C	+5 above ambient to +50, ± 0.1		
Temperature Uniformity ³⁾	°C	± 0.25		
CO ₂ Control Range and Fluctuation ³⁾	%	0 to 20, ± 0.15		
Humidity Level & Fluctuation	% RH	95 at 37°C, ± 5		
Control				
Controller		Microprocessor		
Temperature Sensor		Thermistor		
Display		Color LCD touchscreen readable in 0.1 increments		
Sensor	CO ₂	Dual filter IR		
Construction				
Exterior Material		Painted steel (rear cover coated steel)		
Interior Material		Stainless steel copper enriched alloy		
Outer Door	qty	1		
Field Reversible Door		Included		
Inner Door	qty	1 (sealing tempered glass with positive latch)		
Humidity Pan	qty	1 (stainless steel)		
Shelves	qty	4 (stainless steel copper enriched alloy)		
Shelf Dimension (W x D x H)	inches mm	18.5 x 17.7 x 0.5 470 x 450 x 12		
Max. Load per Shelf	lbs kg	15 7		
Max. Total Load	lbs kg	60 28		
Max. Shelf Capacity	qty	10		
Access Port / Position	qty	1; rear upper left		
Access Port Diameter	inches mm	1.2 30 (with silicone (non-VOC) stopper)		
Leveling Feet	qty	4		
Decontamination Control				
InCu-safe Chamber, Plenum, Shelves	passive	Included (stainless steel copper enriched alloy)		
SafeCell UV Light System	passive/active	Included		
Hydrogen Peroxide (H ₂ O ₂) Vapor	active	Optional	Included	
Alarms (V=Visual Alarm, Buzzer Alarm, R=Remote Alarm)				
Power Failure		R		
Temperature Deviation	high	V-B-R		
Gas Deviation	CO ₂	V-B-R		
Supply Empty	CO ₂	V-B-R		
Door Open		V-B		
Electrical and Noise Level				
Power Supply		115V, 1Ø, 60Hz, NEMA 5-15P requires NEMA 5-15R receptacle		
Noise Level ⁴⁾	dB(A)	29		
Options				
Hydrogen Peroxide (H ₂ O ₂) Vapor Board		MCO-170HB-PA ⁵⁾	Included	
Outer Door – Password Access Electronic Lock		MCO-170EL-PW ⁵⁾	Included	
H ₂ O ₂ Vapor Generator		MCO-HP-PW ⁵⁾		
H ₂ O ₂ Reagent	package of 6	MCO-H2O2-PV		
CO ₂ Gas Pressure Regulator	psi	0 – 15; MCO-100L		
Automatic CO ₂ Cylinder Changeover System		MCO-21GC-PW		
InCu-safe Shelf		MCO-170ST-PW		
InCu-safe Shelf-Reinforced		MCO-170RT-PW		
Double Stacking Bracket ⁶⁾		MCO-170PS-PW		
Roller Base		MCO-170RB-PW		
4-20mA Analog Output		MCO-420MA-PW		
Optional Communication System				
Wireless, Cloud-based, Automatic Data Management		LabAlert® Monitoring System		

¹⁾ Exterior dimensions of main cabinet only, excluding handle and other external projections

²⁾ Current warranty offered at time of printing and may be subject to change; US and Canada only

³⁾ Ambient temperature 23°C, setting 37°C, CO₂ 5%, no load

⁴⁾ Nominal value, background noise 20 dB(A)

⁵⁾ MCO-170AIC series requires MCO-170HB-PA, MCO-170EL-PW and MCO-HP-PW for H₂O₂ Decontamination

⁶⁾ If stacking two incubators, make sure the double stacking dedicated secure hardware and spacer are used
Note: Additional options available.

Specifications are subject to change without notice.

For latest specification information contact PHC Corporation of North America at info@us.phcd.com.
Performance data herein is based on independent testing at time of publication.