

MPR-1014-PA | MPR-1014R-PA

Pharmaceutical Refrigerators



Uniformity with Forced Air Circulation

Forced air circulation allows for precise temperature uniformity, even after frequent door openings.

Remarkable Cooling Efficiency

A highly efficient hermetic compressor provides efficient cooling and maintains temperature level.

Ergonomic Design

Large glass panels allow for an easy viewing of stored items. The slim profile also allows for quick retrieval of all products.

High
Performance



Uniformity



Optimum
Footprint



36.4 cu.ft. | 36.3 cu.ft.

Operating Range

The digital display shows temperature readings in the gradients of 1°C. The configurable temperature for pharmaceutical refrigerators ranges from 2° to 14°C.

Stable Temperature



Microprocessor Controls

Comprehensive [setpoint](#), [alarm](#), [monitoring](#), and [diagnostic functions](#) are based on a microprocessor controller with digital display of all input/output functions.



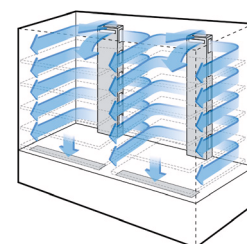
Door alarm
lamp

Digital
Temperature
Indicator



Validated Storage

Our plenum design allows for uniform cold airflow distribution throughout the chamber to ensure temperature uniformity. This is essential for validated storage requirements.





Cycle Defrost System

Defrosting is performed automatically during compressor "off" cycles by sensing frost levels. This way defrosting is performed only when required, further protecting the contents against unnecessary temperature rise. The defrosting heater also acts as an emergency heat source to prevent samples from freezing in extremely low ambient temperature conditions (below 0°C).

Pharmaceutical Refrigerators

We offer an integrated solution for precise storage temperatures, which are necessary for pharmaceuticals, medicines, vaccines and other temperature-sensitive samples.

Ergonomic Design

The ergonomic design of the MPR series refrigerators provides a clear view of stored items through the large framed windows. The slim profile allows for easy retrieval of all the products.

Safety

Audible and flashing LED visual alarms alert you to the unlikely event of either a high or low temperature condition. If the inside temperature rises abnormally, an over-shooting prevention circuit automatically switches off the fan motor or heater.

Effective Temperature Control

A thermistor sensor monitors temperature inside the chamber. The microprocessor and the electronic temperature controls ensure that

the set temperature is maintained. Even with frequent door openings, the circulation fan provides rapid temperature adjustment for a highly reliable, stable preservation environment unaffected by ambient temperature.

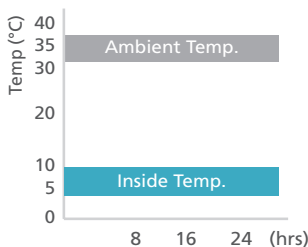
Cabinet Construction

Due to the space saving design, less installation space is required. Two double-paned sliding glass doors seal tightly to maintain uniformity.

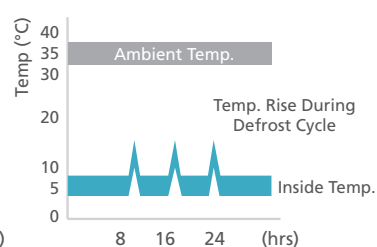
Rigid polyurethane foam insulation construction acts to keep cold air inside the unit and effectively protects against the intrusion of warm air.

Chemical resistant stainless steel interior surfaces of the cabinet ensure long-lasting service for many years of use.

PHCbi Cycle Defrost



Conventional Refrigerator



(Set temp 5°C at 23°C ambient no load actual power consumption may vary depending on load, ambient and set temp)

MODEL	MPR-1014-PA
TEMPERATURE RANGE	2°C to 14°C
EXTERIOR DIMENSIONS (W X F-B X H)	70.9" x 23.6" x 70.5" 1800 x 600 x 1790 mm
INTERIOR DIMENSIONS (W X F-B X H)	66.9" x 18.3" x 51.2" 1700 x 465 x 1300 mm
EFFECTIVE CAPACITY	36.5 cu.ft. (1033 liters)
WIRE SHELVES	Adjustable
OUTER DOORS	2 Sliding doors. Double paned glass window with heat reflection film.
SHELVES & SLIDING RACKS	10 Polyester-coated wire shelves (Load: 110 lbs. per shelf)
COOLING METHOD	Forced cool air circulation
INTERNAL LIGHTING	Fluorescent
DEFROSTING	Fully Automatic Cycle Defrost
POWER REQUIREMENTS	115V/60 Hz/6.43 kWh/day, NEMA 5-15P Plug
NET WEIGHT	542 lbs. (246 kg.)

MODEL	MPR-1014R-PA
TEMPERATURE RANGE	2°C to 14°C
EXTERIOR DIMENSIONS (W X F-B X H)	70.9" x 23.6" x 70.5" 1800 x 600 x 1790 mm
INTERIOR DIMENSIONS (W X F-B X H)	66.9" x 18.3" x 51.2" 1700 x 465 x 1300 mm
EFFECTIVE CAPACITY	36.3 cu.ft. (1029 liters)
WIRE SHELVES	½ Adjustable, ½ Roll-out
OUTER DOORS	2 Sliding doors. Double paned glass window with heat reflection film.
SHELVES & SLIDING RACKS	5 Polyester-coated shelves and 10 polyester-coated sliding racks (Load: 110 lbs. per shelf and 44 lbs. per rack)
COOLING METHOD	Forced cool air circulation
INTERNAL LIGHTING	Fluorescent
DEFROSTING	Fully Automatic Cycle Defrost
POWER REQUIREMENTS	115V/60 Hz/6.43 kWh/day, NEMA 5-15P Plug
NET WEIGHT	569 lbs. (258 kg.)



PHC Corporation of North America
1300 Michael Drive, Suite A, Wood Dale, IL 60191
Toll Free USA (800) 858-8442, Fax (630) 238-0074
www.phchd.com/us/biomedical

Specifications are subject to change without notice. For latest specification information contact PHC Corporation of North America at info@us.phchd.com. Performance data herein is based on independent testing at time of publication.

