

Animal Research Clean Benches

AniGARD®

Clean Benches for Animal Research

- Spacious, easily accessible work areas accommodate a variety of cage sizes and activities.
- Ergonomic design with efficient lighting increases user comfort and visibility.
- Designed for easy movement and maneuverability throughout the laboratory.
- Offers up to ISO Class 4 (Class 10) protection by delivering HEPA-filtered, particulate-free air.
- Blower/motor system extends filter life, minimizing filter replacements and life-cycle costs.

Comfortable, easily accessible designs make these clean benches ideal for the animal laboratory environment. Designed exclusively for live animal cell culture applications within the animal research laboratory, our clean benches are backed by years of extensive research, customer feedback, and product testing to ensure that you experience optimum productivity, safety, and versatility.



bakerco.com



AniGARD® e3 Animal Transfer Station

Vertical-Flow Partially-Recirculating
Clean Bench Multi-Sided 4' and 5'
Cabinets, Energy Efficient Engineered

The AniGARD® e3 combines improved containment and enhanced ergonomics with lower energy requirements to provide you with unrivaled performance and protection. This durable, easily maneuverable animal transfer station features an ergonomically engineered, adjustable work surface and slanted viewscreen for increased worker comfort. Permitting operator access on three sides, the AniGARD® e3 ATS is designed to provide animal protection and particulate control in the laboratory while maximizing productivity and flexibility. The AniGARD® e3 provides ISO Class 4 (Class 10) air cleanliness and was designed to reduce user exposure to allergens.

Energy Efficient Engineered

The AniGARD® e3 utilizes StediFLOW™, a self-adjusting motor technology that requires less energy, extends filter life, and reduces heat output to the lab without sacrificing performance.



DESIGNED TO INCREASE YOUR PRODUCTIVITY

AN OPTIMUM BALANCE OF ENERGY EFFICIENCY

- Designed to Increase Your Productivity.
- Comfortable user experience.
- Slanted viewscreen on three sides of cabinet provides a direct line-of-sight panoramic view of the workspace.
- Well-lit workspace significantly reduces eyestrain.
- Low noise level improves operator comfort and reduces effect of ambient noise on animals.
- HEPA-filtered air throughout the work surface provides ISO Class 4 (Class 10) protection, reducing operator's exposure to allergens.
- 12" knee space opening provides seated access for small procedures.

EASE OF USE AND VERSATILITY

- Three-sided work area permits access by multiple operators, facilitating team-based projects.
- 14" high access openings and a flat, spacious work surface allow cages in a variety of sizes to be pulled in and out quickly.
- Hinged viewscreen opens to 21(3/4)" for moving large items in and out of the workspace prior to working in the cabinet, allowing greater visibility and access to work area.
- Electric hydraulic lift motor adjusts, allowing a work surface height of 32(1/2)" to 44" (with 5" casters) to maximize individual comfort.
- Wide tread stainless steel casters for easy maneuverability and movement throughout the lab.
- 25' retractable power cord provides greater range of use without unplugging.
- Optional pull bar provides ultimate portability.

SUPERIOR PERFORMANCE IN CLEANLINESS, PROTECTION, AND CONTAINMENT

- Air Cleanliness – ISO Class 4 at 0.5 micron (Class 10).
- Product Protection – Meets NSF 49 requirements (for biosafety cabinets).
- Allergen Control – Approaches NSF 49 requirements (for biosafety cabinets).
- Minimizes cage-to-cage cross contamination.
- Optional ULPA filtration for increased product and personnel protection.



Direct Access for Simple Cleaning

BAKER BUILDS IT BETTER

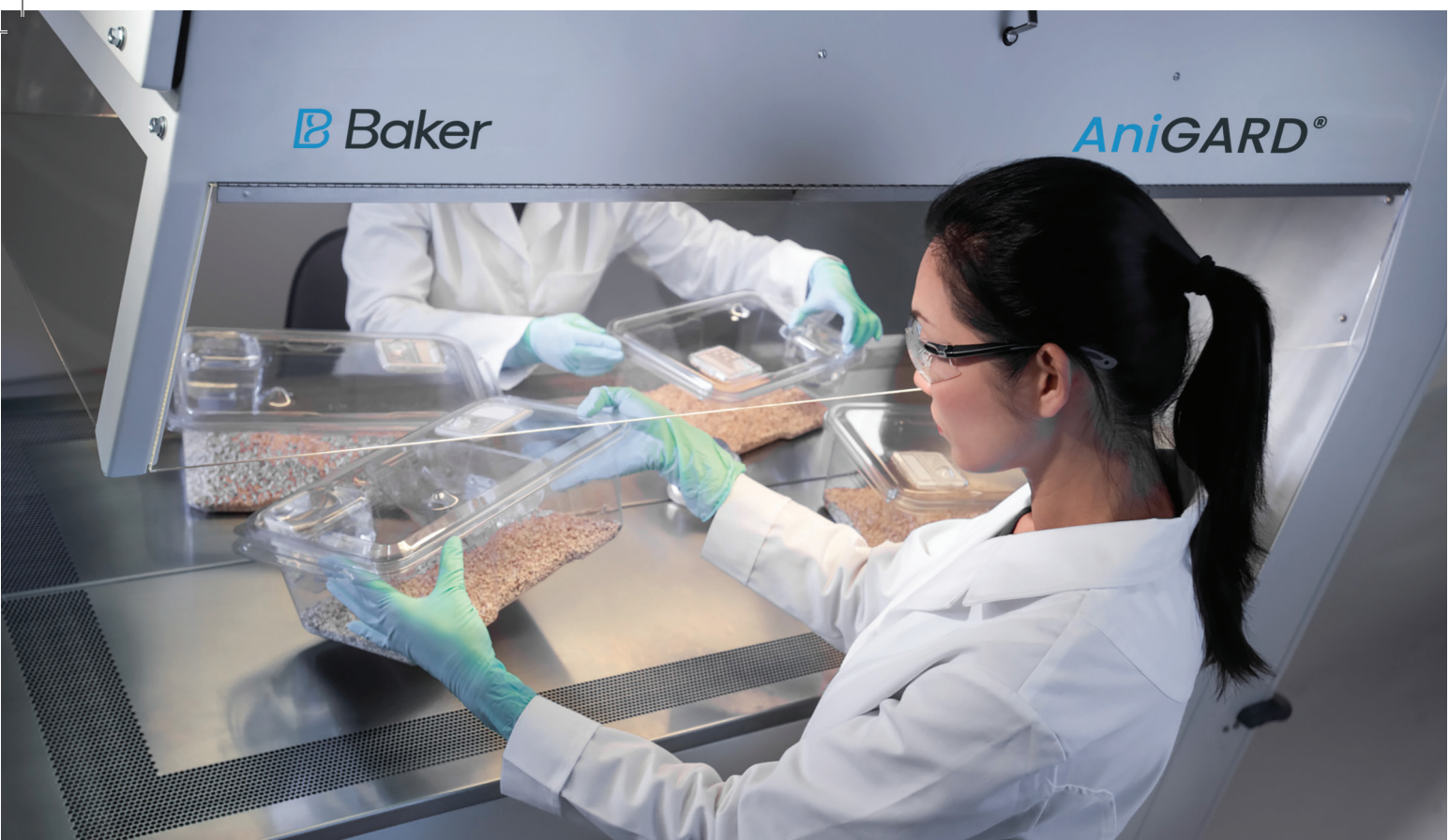
Manufactured for durability

- Stainless steel side wall resistant to sterilants and clydox to greatly reduce potential for corrosion.
- Corner rubber bumpers protect the unit and the lab during minor collisions.
- 1/4" clear acrylic, scratch-resistant viewscreen.
- Leg stiffeners and large stainless steel.
- casters provide a solid base for the unit.

Designed for easy cleaning and maintenance

- Moveable, two-piece work surface for easy access to spill tray and pre-filter.
- Welded, full perimeter drain pan under the work surface with 1" drain valve catches liquid or spills and protects electrical components.
- HEPA filters are easily accessed at the top of the cabinet.
- Easily removable pre-filter is located below the work surface.
- Designed for easy serviceability including access panels for all electrical components.
- Blower/motor system extends filter life, minimizing filter replacements and life-cycle costs.





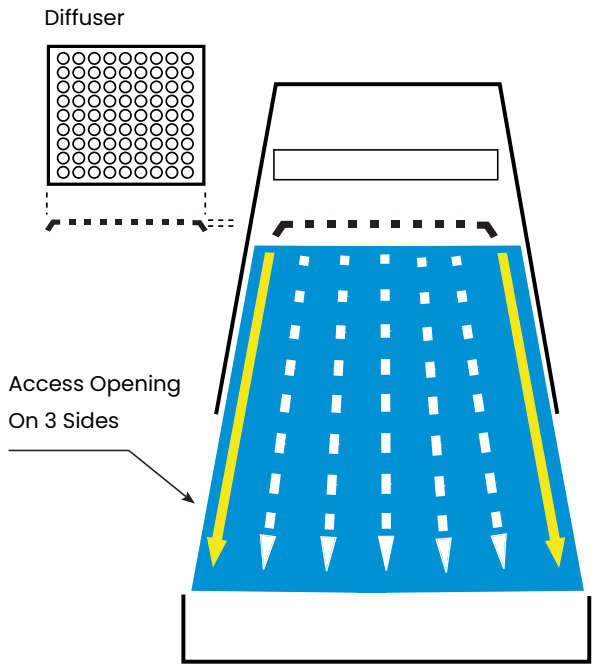
EXCLUSIVE MOMENTUM AIR CURTAIN ENSURES SAFETY

The AniGARD® e3 employs a unique high-velocity momentum air curtain to help ensure product protection and offers personnel protection without restricting access.

This unique airflow design generates a strong air barrier along the perimeter of the work surface, working to prevent room particulates from entering the work area.

A stainless steel diffuser strategically positioned just below the supply filter directs filtered air down the inside of the viewscreen, creating faster airflow compared to the center of the work area.

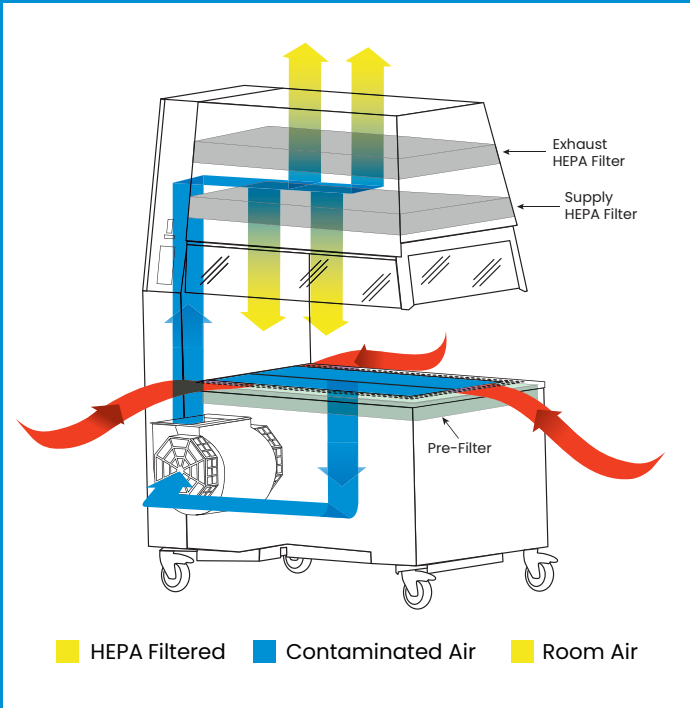
Perforations along the perimeter of the work surface under negative pressure assist in capturing particulates that are entrained by the momentum air curtain.



Faster airflow at viewscreen increases protection without restricting access.

AIRFLOW DESIGN ENSURES MAXIMUM PROTECTION

The AniGARD® e3 is designed to protect animals from particulate exposure and cross-contamination and reduce users' exposure to allergens by providing HEPA filtration in a partially recirculating air system. Its recirculating air design eliminates air discharge near the floor that could kick up dust and dander from the floor and into the environment.



How the AniGARD® e3 Works:

- HEPA-filtered air is delivered to the work area in a vertical downward flow.
- The air passes through a pre-filter located under the work surface, where large particulates are captured.
- A blower forces air through a vertical duct and into the top of the cabinet.
- Half of the air passes through the HEPA supply filter and enters the workspace, and half of the air passes through the HEPA exhaust filter and is released to the laboratory.
- A viewscreen prevents the operator's head from entering the clean air stream.



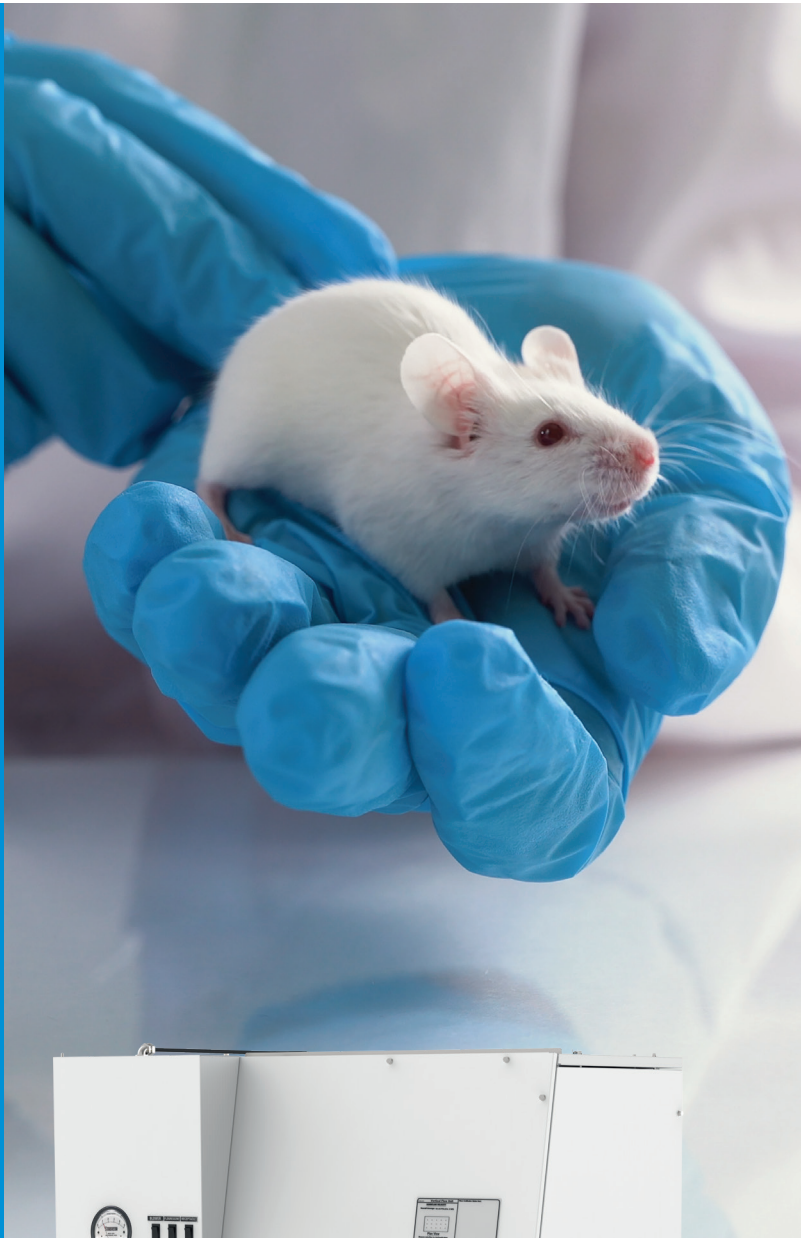
AniGARD® VF Animal Transfer Station

Vertical-Flow Recirculating Clean
Bench With Optional Mobile Stand
Single-Sided 4', 5' and 6' Models

The AniGARD® VF Animal Transfer Station is a single-sided, vertical-flow clean bench with spacious access for cage changing and protocols where both animal protection and particulate control are required. This ergonomically engineered cabinet features an optional adjustable work surface and slanted viewscreen for increased worker comfort.

INCREASED LAB PRODUCTIVITY

- 14" high access opening accommodates a variety of cage sizes, and offers a wide work area for multiple users.
- Flat, spacious work surface allows cages to be pulled in and out quickly.
- Hinged viewscreen opens to 30(3/8)" allowing access to work area.



EASE OF USE AND VERSATILITY

- When configured with mobile stand, casters and pull bars, easy to move and maneuver.
- At the lowest adjustment, the unit fits through standard doorways and down laboratory aisles.
- Optional electric/hydraulic lift system positions the work surface elevation at levels from 22" to 40(1/2)".

COMFORTABLE USER EXPERIENCE

- Slanted 10° viewscreen for operator comfort and direct line-of-sight viewing.
- Well-lit workspace reduces eyestrain.
- Low noise level improves operator comfort and reduces effect of ambient noise on animals.
- Provides ISO Class 5 (Class 100) protection by delivering HEPA- filtered air to the work surface.

BAKER BUILDS IT BETTER

- All clean benches are subjected to rigorous testing prior to shipping.
- Primary HEPA supply filter is removed through the front plenum area.
- Designed for easy serviceability, including access panels for all electrical components.
- Rear forklift slots facilitate installation. (Available on lift stand option.)
- Pre-filter below work surface helps capture large particles, prolonging HEPA filter life.
- Unique high-velocity momentum air curtain to help ensure product protection without restricting access.



Technical Specifications

AniGARD® e3

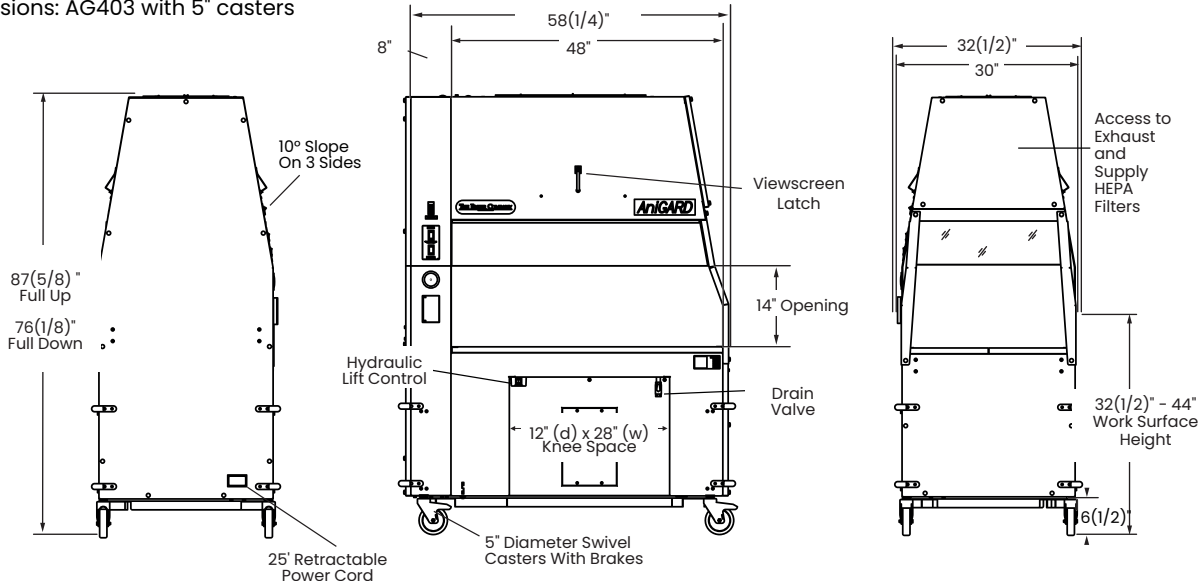


ANIGARD® E3 ANIMAL TRANSFER STATION

PERFORMANCE DATA

MODEL NUMBER	AG403	AG503
Size	4'	5'
Exterior Dimensions (w x d x h [min to max])	58(1/4)" x 32(1/2)" x [76(1/8)" - 87(5/8)"]	70(1/4)" x 32(1/2)" x [76(1/8)" - 87(5/8)"]
Interior Dimensions (w x d x h)	48" x 30" x 22(3/4)"	60" x 30" x 22(3/4)"
Work Surface Height [min to max]	32(1/2)" - 44"	32(1/2)" - 44"
Usable Workspace (w x d)	42(5/8)" x 21(13/16)"	54(5/8)" x 21(13/16)"
Weight	535 lbs	585 lbs
Shipping Weight	655 lbs	720 lbs
Access Opening (working position)	14"	14"
Access Opening (loading/cleaning position)	21(3/4)"	21(3/4)"
Operating Amperage	3.7 Amps	4.8 Amps
Power Consumption	426 Watts	552 Watts
Heat Generation	1,454 BTU/hr	1,885 BTU/hr
Electrical Requirements*	115 V AC, 15 Amps, 60 Hz	115 V AC, 15 Amps, 60 Hz
Noise - NSF Method	59 dBa	62 dBA
Noise - EN Method	57 dBa	60 dBa
Lighting - Minimum average at work surface	100 foot candles	100 foot candles

Dimensions: AG403 with 5" casters



*Also available in 100V (not UL listed) and 220V (CE compliant).

Technical Specifications

AniGARD® VF



ANIGARD® VF ANIMAL TRANSFER STATION

PERFORMANCE DATA

MODEL NUMBER	AG4VF402	AG5VF502	AG6VF602
Size (nominal)	4'	5'	6'
Exterior Dimensions w/ Stationary Stand (w x d x h [min to max])	64" x 32" x [89(1/16)" - 97(9/16)"]	76" x 32" x [89(1/16)" - 97(9/16)"]	88" x 32" x [89(1/16)" - 97(9/16)"]
Interior Dimensions (w x d x h)	46" x 25(1/8)" x 31(13/16)"	58" x 25(1/8)" x 31(13/16)"	70" x 25 1/8" x 31(13/16)"
Shipping Weight Benchtop model With channel stand	465 lbs 637 lbs	634 lbs 706 lbs	694 lbs 776 lbs
Access Opening (working position)	14"	14"	14"
Access Opening (loading/cleaning position)	30(3/8)"	30(3/8)"	30(3/8)"
Electrical Requirements	115 V, AC	115 V, AC	115 V, AC
Amps / Breaker	16 / 20	16 / 20	16 / 20

Caution

A clean bench is not designed to protect personnel or the environment from potentially harmful agents. The adequacy of this product for the user's personal safety, as with any clean bench, should be determined by an industrial hygienist or safety officer. Site preparation information, architectural drawings, detailed dimensions and purchase specifications are available.

Warranty

AniGARD® e3 and VF - Thirty-six months from the invoice date (inside the U.S.)

The Baker Company, Inc., expressly represents and warrants all goods (a) to be as specified (and described) in The Baker Company catalogs and literature, and (b) to be free under normal use, service and testing (all as described in The Baker Company catalogs and literature) from defects in material and workmanship for the period specified below. The exclusive remedy for any breach or violation of this warranty is as follows: The Baker Company, Inc., will F.O.B. Sanford, Maine, furnish without charge repairs to or replacement of the parts or equipment that proved defective in material or workmanship. No claim may be made for any incidental or consequential damages.

THIS WARRANTY IS EXPRESSLY IN LIEU OF ALL OTHER WARRANTIES, EXPRESSED OR IMPLIED, INCLUDING ANY IMPLIED WARRANTY OF MERCHANTABILITY OR FITNESS FOR A PARTICULAR PURPOSE UNLESS OTHERWISE AGREED IN WRITING SIGNED BY THE BAKER COMPANY. (THE BAKER COMPANY SHALL NOT BE RESPONSIBLE FOR ANY IMPROPER USE, INSTALLATION, SERVICE OR TESTING OF THE GOODS.)

