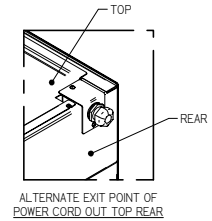


REV	DESCRIPTION	DATE	DRN	CHK BY	CRD DATE
A	ORIGINAL RELEASE	-	-	-	-
B	UPDATED DRAWING AFTER UL TEST RESULTS	04/02/22	LAM	-	-

- NOTES:
1. ELECTRICAL REQUIREMENTS: 115 VAC, 20 AMP, 60 HZ, SINGLE PHASE
  2. CONSTRUCTION:  
WORKSURFACE/WORK AREA - 16 GA[1.5 MM] 304 SS, #4 FINISH  
ACCESS PANELS - 16[1.5 MM] & 18 GA[1.2 MM] C.R.S. WITH A BAKER PERMA WHITE POLYESTER HYBRID POWDER COAT FINISH
  3. FILTER, MOTOR, BLOWER AND ALL ELECTRICAL COMPONENTS ARE FRONT ACCESSIBLE.
  4. MATERIAL OPTIONS: CRS AND SS CONSTRUCTION.



ALTERNATE EXIT POINT OF POWER CORD OUT TOP REAR

SECTION A-A

IMPORTANT: 41-3/8" MAX. WORK SURFACE ELEVATION PER UL 10 DEGREE TILT TEST

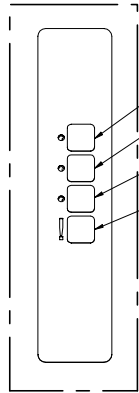
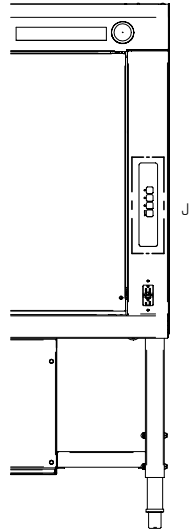
STANDARD UNIT WEIGHT = 835 LBS [379 KG]



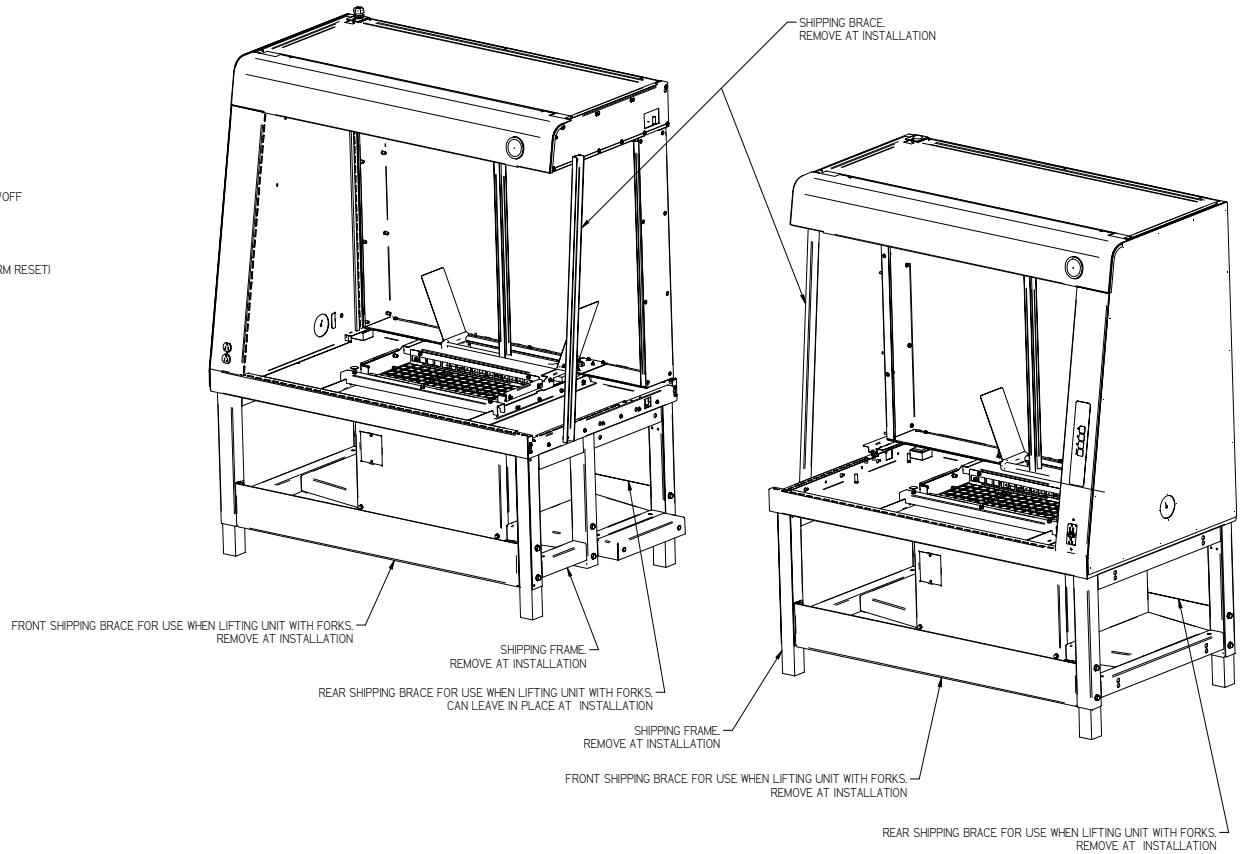
Edgeward Model EG801 Horz Flow Clean Bench		BAKER		101 Southview Road, Northford, CT 06457 PH: 860-339-8771 / web: www.bakerinc.com		Edgeward Model EG801 Horz Flow Clean Bench	
SIZE		MATERIAL		SUGG. RET.		REV.	
D		BGA-EG801-STD		B		1 OF 12	

1 2 3 4 5 6 7 8

REV	DESCRIPTION	DATE	DRN	CHK BY	CHK DATE
A	ORIGINAL RELEASE	-	-	-	-
B	UPDATED DRAWING AFTER UL TEST RESULTS	6/6/2022	LAM	-	-



DETAIL J  
CONTROL TOUCHPAD LAYOUT

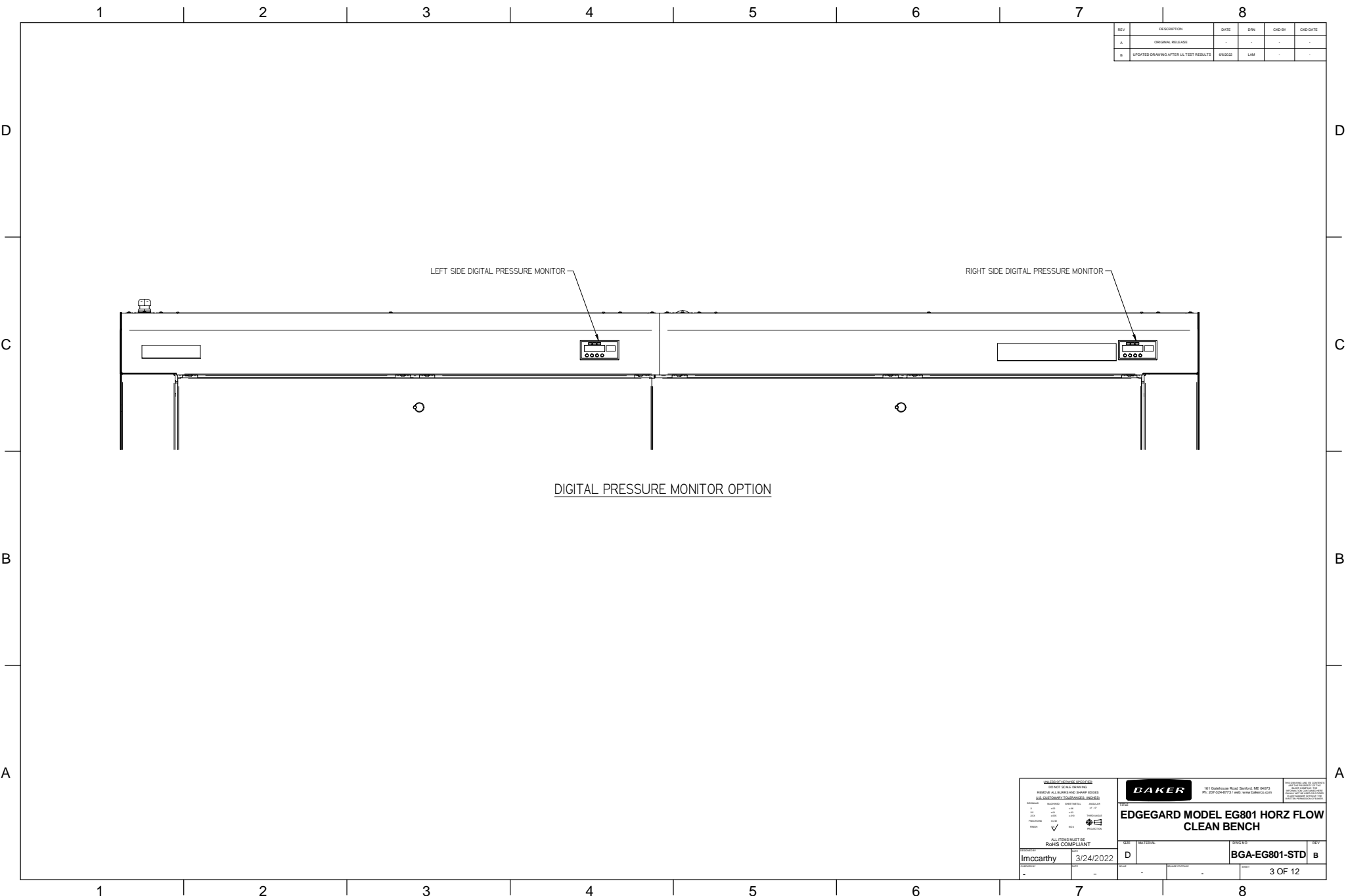


### SHIPPING CONFIGURATION

ASSEMBLY REQUIRED

WORK SURFACE, SUPPLY FILTERS, AND AIR DIFFUSERS SHIPPED SEPARATELY.  
HARDWARE FOR JOINING LEFT AND RIGHT SECTIONS PROVIDED.

<small>DO NOT RE-USE OR REPAIR</small> <small>REMOVE ALL BOLTS AND NUTS FROM THE UNIT</small> <small>ALL COMPONENTS TO BE REUSED OR REPAIRED</small>		<b>BAKER</b> <small>101 Southview Road, Northbrook, IL 60062 PH: 847.534.4771 / web: www.bakerinc.com</small>		<small>FOR INFORMATION ONLY - DO NOT USE FOR ORDERING THIS IS A PRELIMINARY DRAWING ALL DIMENSIONS ARE IN INCHES UNLESS OTHERWISE SPECIFIED</small>
<b>EDGE GARD MODEL EG801 HORZ FLOW CLEAN BENCH</b>		SIZE MATERIAL		REV
PROJECT Imccarthy		DATE 3/24/2022		REV B
PART 1		PART 2		2 OF 12



REV	DESCRIPTION	DATE	DRN	CHK-BY	CHK-DATE
A	ORIGINAL RELEASE	-	-	-	-
B	UPDATED DRAWING AFTER UL TEST RESULTS	6/6/2022	LAM	-	-

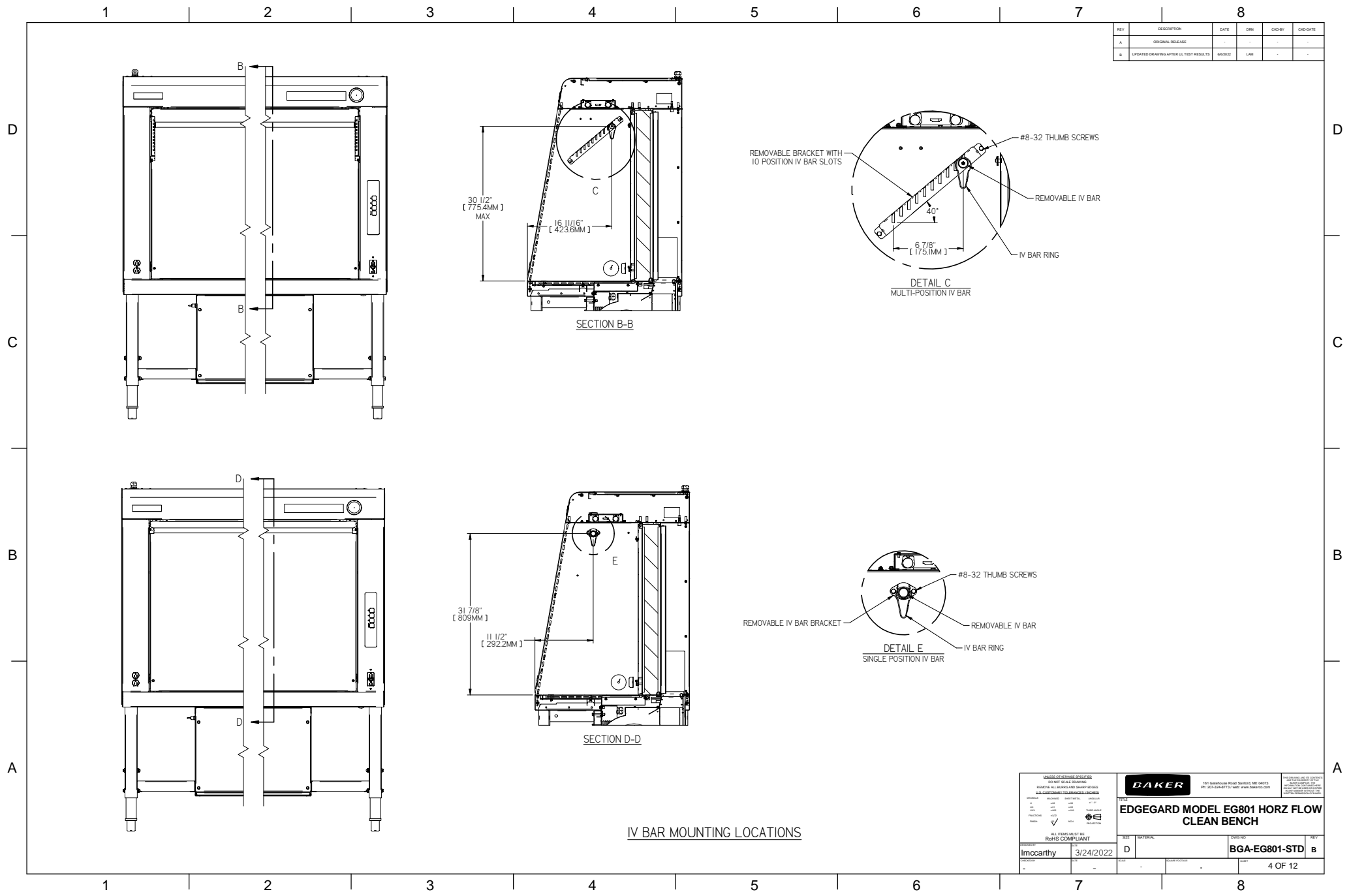
**BAKER**

101 Southview Road, Norwalk, CT 06851  
PH: 203-824-8771 / web: www.bakerco.com

**EDGEgard MODEL EG801 HORZ FLOW CLEAN BENCH**

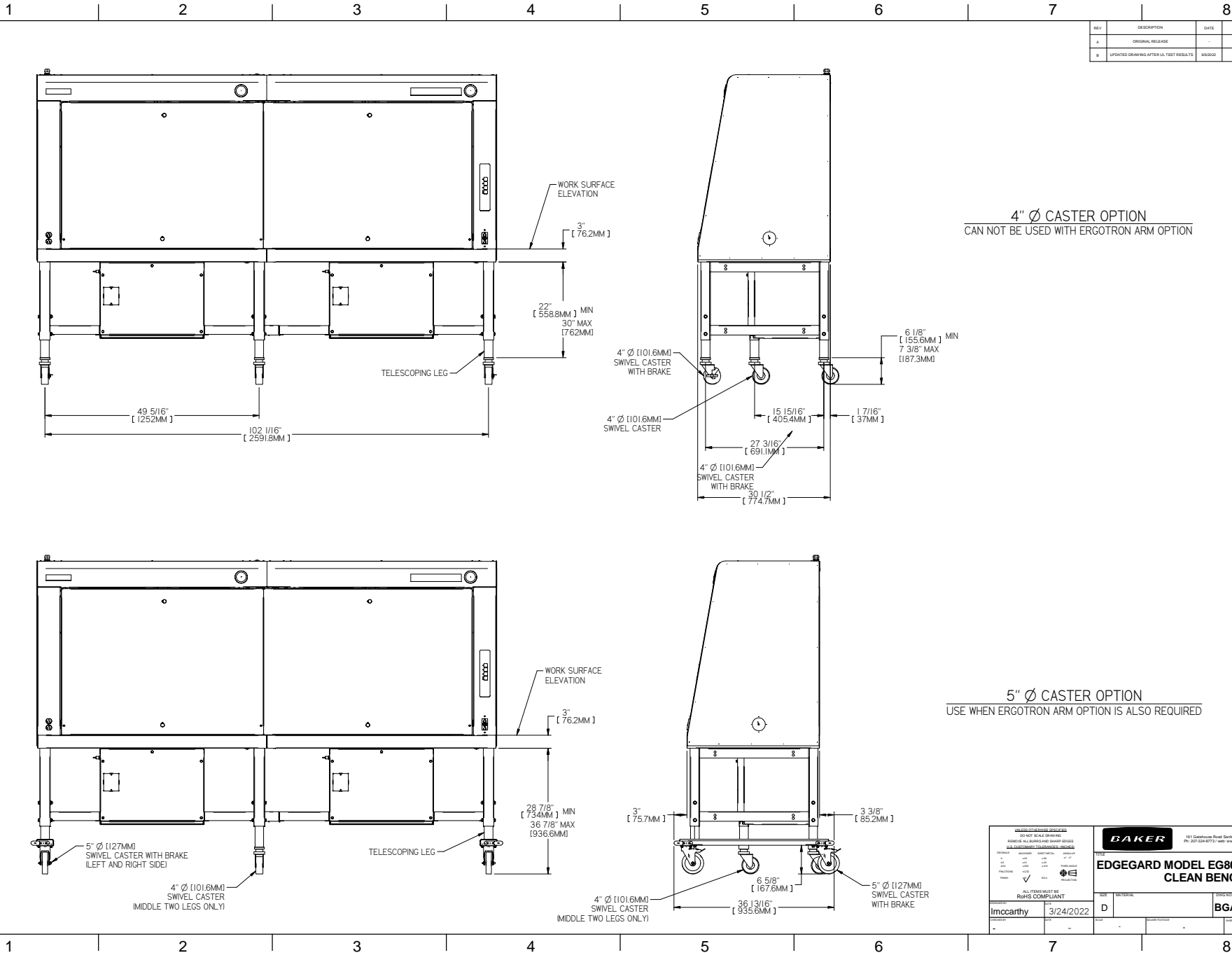
SIZE: D MATERIAL: BGA-EG801-STD

3 OF 12



REV	DESCRIPTION	DATE	DRN	CHK BY	CHK DATE
A	ORIGINAL RELEASE	-	-	-	-
B	UPDATED DRAWING AFTER UL TEST RESULTS	6/6/2022	LAM	-	-

<u>BAKER</u> 101 Southview Road, Norwalk, CT 06851 PH: 203-847-8771 / web: www.bakerinc.com		<u>BAKER</u> 101 Southview Road, Norwalk, CT 06851 PH: 203-847-8771 / web: www.bakerinc.com	
EDGEGARD MODEL EG801 HORZ FLOW CLEAN BENCH			
DATE	3/24/2022	SIZE	D
BY	Imccarthy	MODEL	BGA-EG801-STD
REV	-	REV	-
4 OF 12		B	

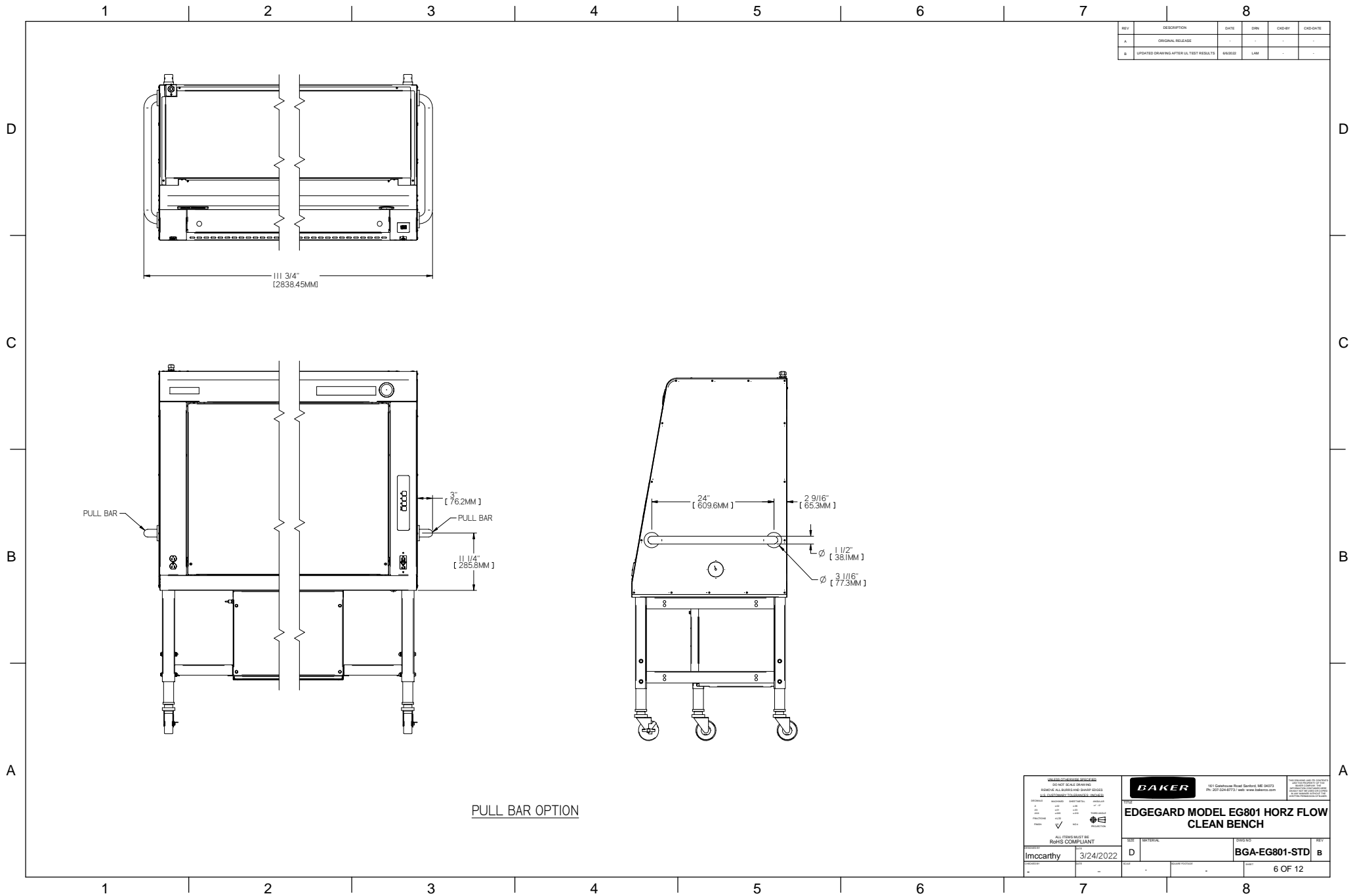


REV	DESCRIPTION	DATE	DRN	CHK BY	ENG DATE
A	ORIGINAL RELEASE	-	-	-	-
B	UPDATED DRAWING AFTER UL TEST RESULTS	6/6/2022	LAM	-	-

4" Ø CASTER OPTION  
CAN NOT BE USED WITH ERGOTRON ARM OPTION

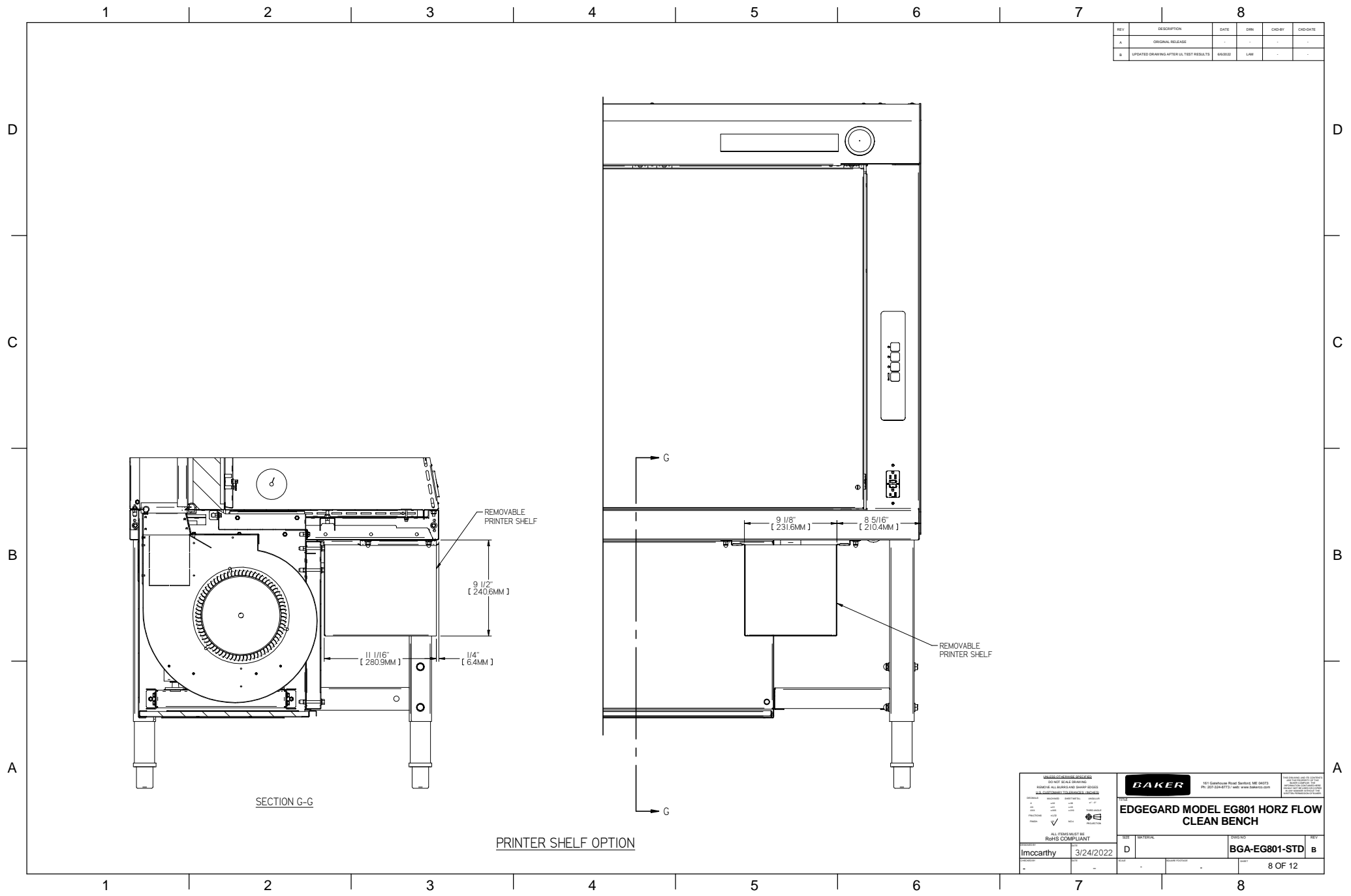
5" Ø CASTER OPTION  
USE WHEN ERGOTRON ARM OPTION IS ALSO REQUIRED

<b>BAKER</b> 101 Southview Road, Northford, CT 06257 PH: 860-338-8771 / web: www.bakerco.com				EDGEGARD MODEL EG801 HORZ FLOW CLEAN BENCH	
Imccarthy				DATE	3/24/2022
500510				REV	5 OF 12



<div>DO NOT SCALE DRAWING</div> <div>REMOVE ALL KEYS AND SHARP EDGES</div> <div>ALL DIMENSIONS TO CENTERLINE UNLESS NOTED</div>				<div><div>BAKER</div><div>181 Southview Road, Norwalk, CT 06851</div><div>PH: 203-324-8771   web: www.bakerco.com</div></div> <div><div>FOR DIMENSIONS AND TOLERANCES</div><div>SEE DRAWING SPECIFICATIONS</div><div>ALL DIMENSIONS TO CENTERLINE UNLESS NOTED</div></div>	
REVISED	ISSUED	APPROVED BY	DATE	TITLE	
Imccarthy	3/24/2022			EDGE GARD MODEL EG801 HORZ FLOW CLEAN BENCH	
SIZE	MATERIAL	DWG NO		REV	
D		BGA-EG801-STD		B	
SHEET		SHEET TOTAL		PAGE	
-		-		6 OF 12	



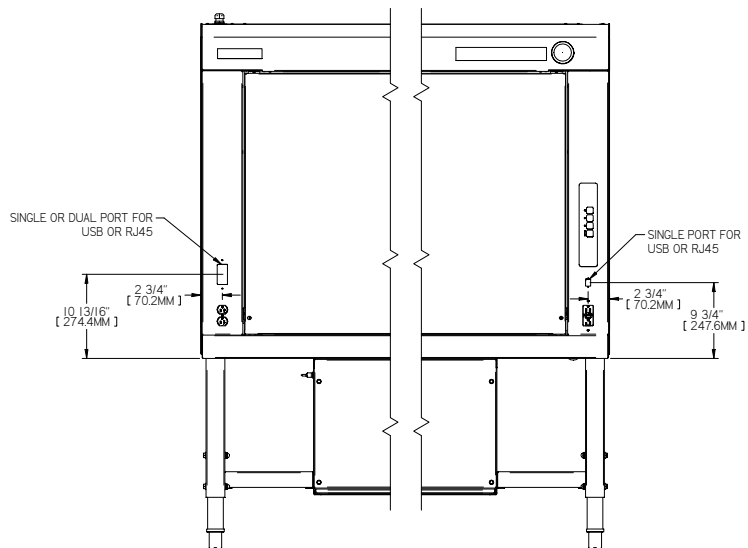


REV	DESCRIPTION	DATE	DRN	CHK BY	CHK DATE
A	ORIGINAL RELEASE	-	-	-	-
B	UPDATED DRAWING AFTER UL TEST RESULTS	6/6/2022	LAM	-	-

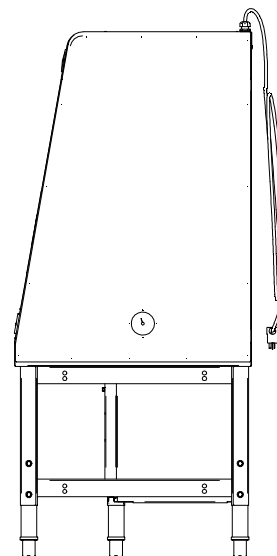
<b>BAKER</b> 161 Southwestern Road, Norwalk, CT 06851 PH: 203-847-7751 / web: www.bakerinc.com				DO NOT SCALE DRAWING REMOVE ALL DIMENSIONS AND DIMENSIONS ALL DIMENSIONS TO CENTERLINE UNLESS NOTED	
FINISHES	STANDARD	ALTERNATE	APPROVAL	<b>EDGE GARD MODEL EG801 HORZ FLOW CLEAN BENCH</b>	
PAINT	POUR	POUR	POUR		
PAINT	POUR	POUR	POUR		
PAINT	POUR	POUR	POUR		
ALL DIMENSIONS MUST BE ROHS COMPLIANT				SIZE MATERIAL	
Imccarthy				BGA-EG801-STD	
3/24/2022				8 OF 12	



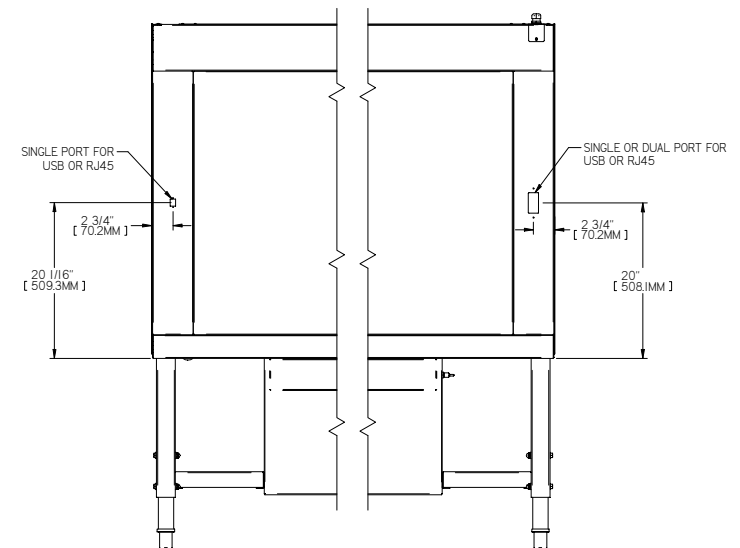
REV	DESCRIPTION	DATE	DRN	CKD-BY	CKD-DATE
A	ORIGINAL RELEASE	-	-	-	-
B	UPDATED DRAWING AFTER UL TEST RESULTS	6/6/2022	LAM	-	-



FRONT VIEW



RIGHT SIDE VIEW

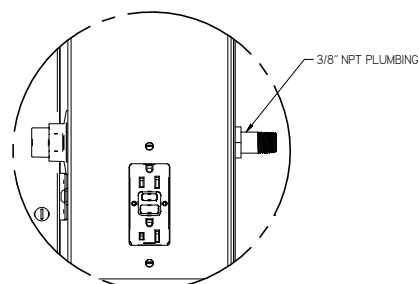
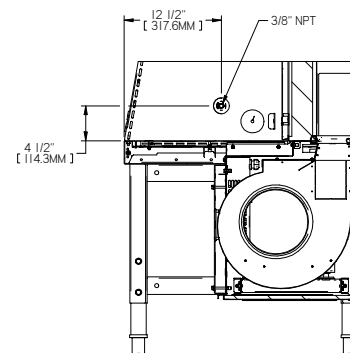
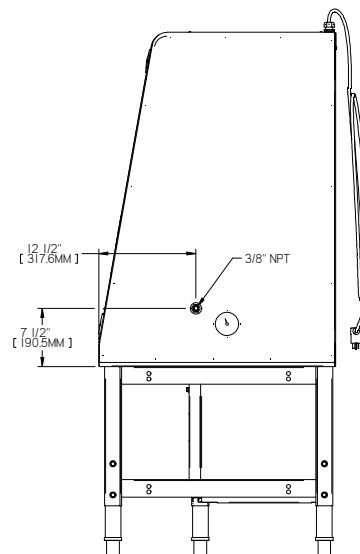
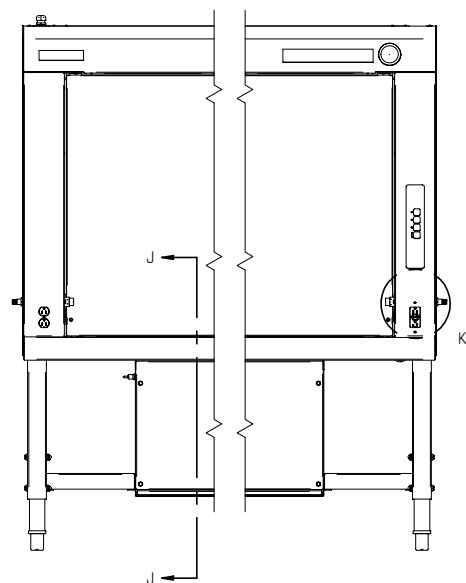


REAR VIEW

### DATA PORT OPTION

101 Gadsden Road Sanford, NC 28783 Ph: 252-334-8771 Fax: 252-334-8880 <a href="http://www.baker.com">www.baker.com</a>		101 Gadsden Road Sanford, NC 28783 Ph: 252-334-8771 Fax: 252-334-8880 <a href="http://www.baker.com">www.baker.com</a>	
<b>EDGEKARD MODEL EG801</b> HORZ FLOW CLEAN BENCH		<b>EDGEKARD MODEL EG801</b> HORZ FLOW CLEAN BENCH	
ALL ITEMS MUST BE ROHS COMPLIANT		ALL ITEMS MUST BE ROHS COMPLIANT	
Imccarthy 3/24/2022	DATE 3/24/2022 D	DOWNSIDE BGA-EG801-STD	REV B
1 OF 12	2 OF 12	3 OF 12	4 OF 12

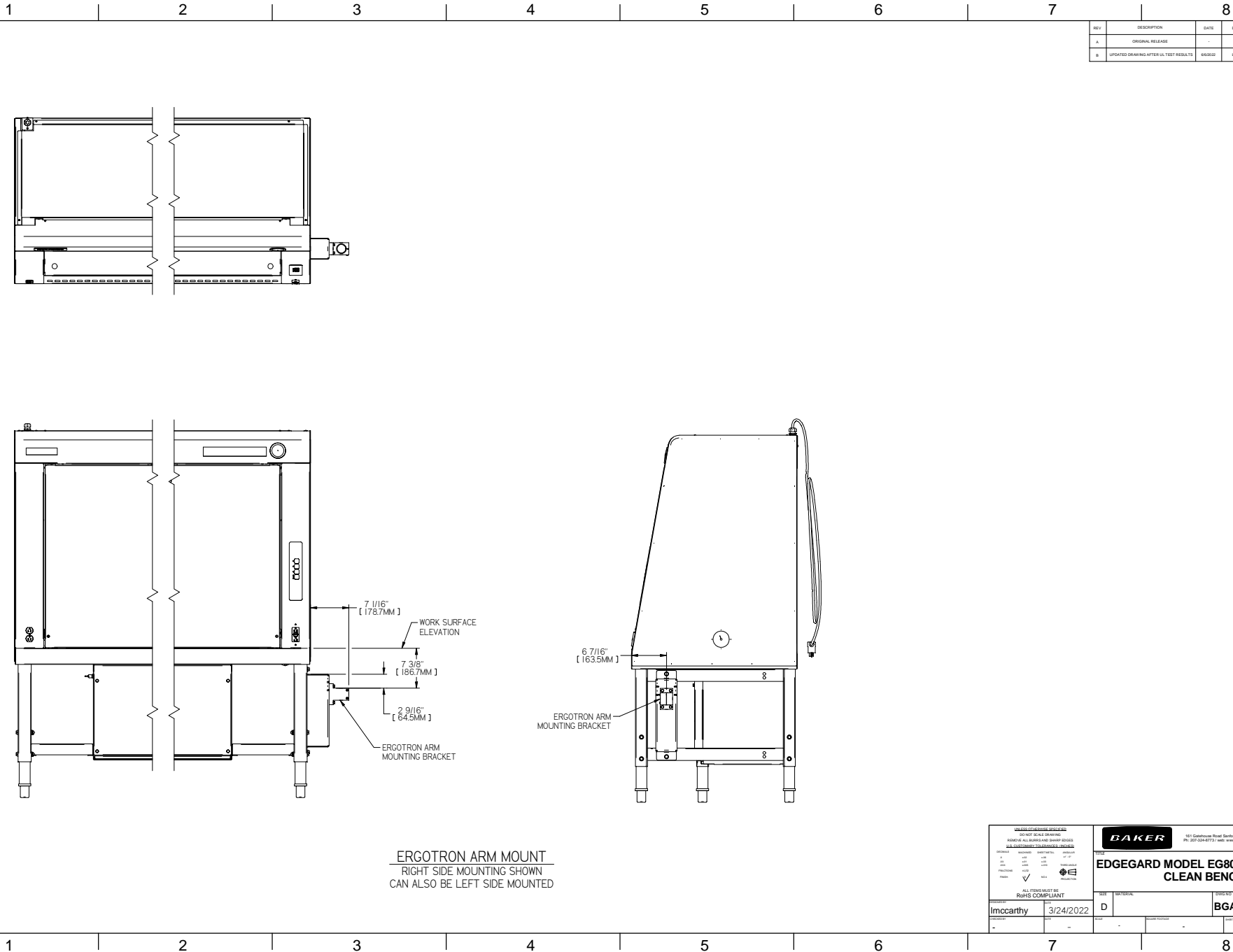
REV	DESCRIPTION	DATE	DRN	CHK-BY	CHK-DATE
A	ORIGINAL RELEASE	-	-	-	-
B	UPDATED DRAWING AFTER UL TEST RESULTS	6/6/2022	LAM	-	-



### PLUMBING OPTION

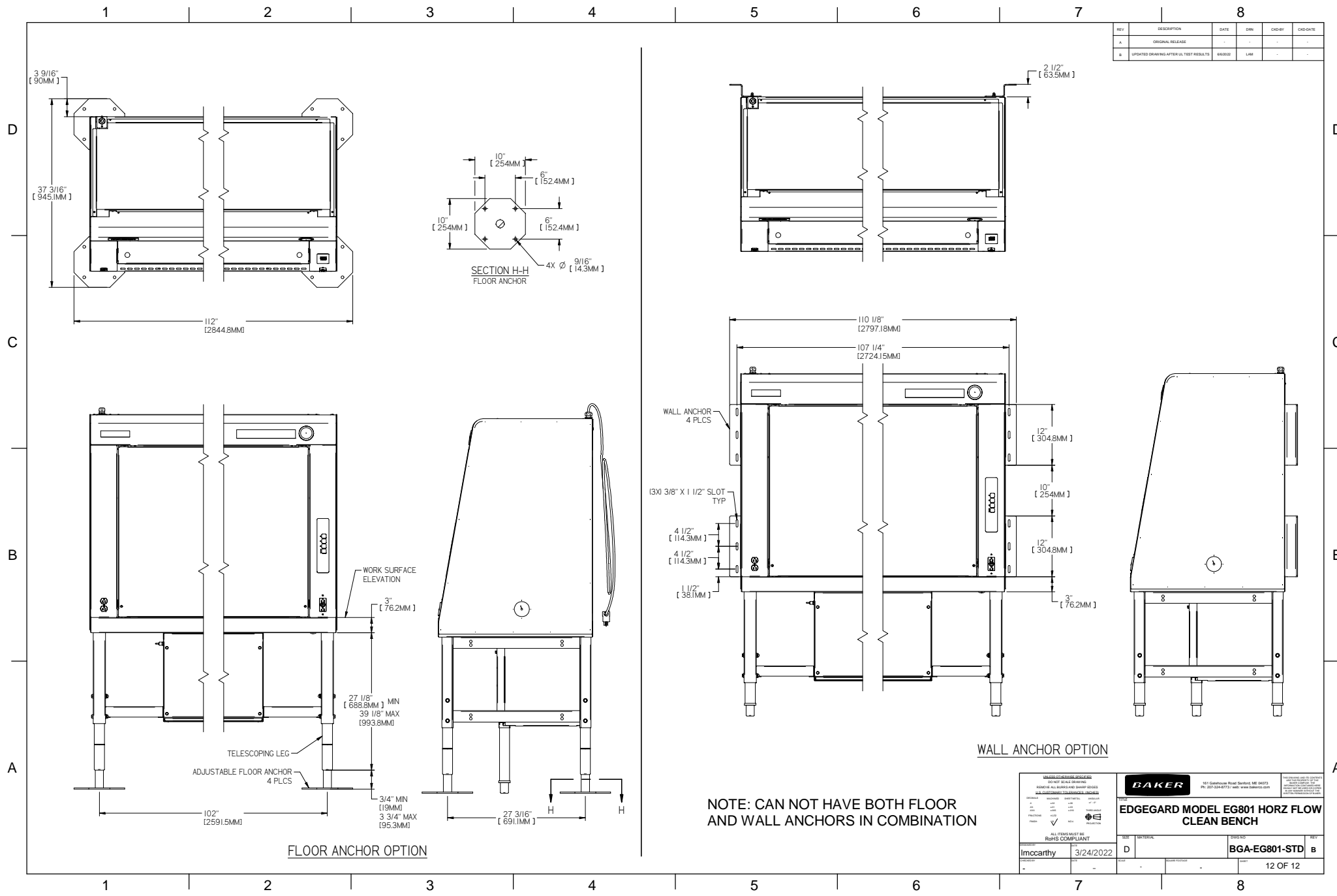
DETAIL K  
PLUMBING THROUGH SIDE WALL  
TYP OTHER SIDE WALL

<p>Imccarthys.com.au          80/107 80-82 80-84          80-86 80-88 80-90 80-92 80-94          80-96 80-98 80-100 80-102 80-104          80-106 80-108 80-110 80-112 80-114          80-116 80-118 80-120 80-122 80-124</p>		<p><b>BAKER</b></p> <p>181 Conditum Road Darfong, ME 05273          PH: 203-284-8773   info: www.bakerinc.com</p>	
<p><b>EDGECARD MODEL EG801 HORZ FLOW CLEAN BENCH</b></p>		<p>SIZE: _____</p>	
<p>ALL ITEMS MUST BE          ROHS COMPLIANT</p>		<p>SIZE: _____ MATERIAL: _____</p>	
<p>Imccarthys 3/24/2022</p>		<p>STUDY NO: <b>BGA-EG801-STD</b></p>	
<p>DATE: _____</p>		<p>DATE: _____</p>	
<p>10 OF 12</p>		<p>10 OF 12</p>	



REV	DESCRIPTION	DATE	DRN	CHK-BY	CHK-DATE
A	ORIGINAL RELEASE	-	-	-	-
B	UPDATED DRAWING AFTER UL TEST RESULTS	6/6/2022	LAM	-	-

<div><div>BAKER</div><div>101 Lonsdale Road, Norwalk, CT 06851 PH: 203-834-8771 / web: www.bakerinc.com</div></div>				101 Lonsdale Road, Norwalk, CT 06851 PH: 203-834-8771 / web: www.bakerinc.com	
ALL DIMENSIONS TO UNLESS OTHERWISE SPECIFIED				ALL DIMENSIONS TO UNLESS OTHERWISE SPECIFIED	
ALL DIMENSIONS MUST BE ROHS COMPLIANT				ALL DIMENSIONS MUST BE ROHS COMPLIANT	
DESCRIPTION	Imccarthy	DATE	3/24/2022	SIZE	11 OF 12
REV	D	DATE	-	SIZE	11 OF 12
REV	D	DATE	-	SIZE	11 OF 12



REV	DESCRIPTION	DATE	DRN	CHK BY	CRG DATE
A	ORIGINAL RELEASE	-	-	-	-
B	UPDATED DRAWING AFTER UL TEST RESULTS	6/6/2022	LAM	-	-

<small>BAKER</small> 101 Southview Road, Northford, CT 06257 PH: 860-334-8771 / web: www.bakerinc.com			
<b>EDGEgard MODEL EG801 HORZ FLOW CLEAN BENCH</b>			
SIZE	D	MATERIAL	BGA-EG801-STD
DATE	3/24/2022	REV	B
12 OF 12			