

DESIGNED FOR YOUR EVOLVING WORKFLOW PRIORITIES

Biomek i-Series Automated Workstations



ACCELERATED WORKFLOWS. Faster Discovery.



YOU TALKED. **WE LISTENED.**

Your priorities continue to evolve; ours never change.

Because our priority is you.

Your input and our experience led to the engineering of a liquid handling platform that enables you to get the trusted, reliable results you need from your application workflows.

From your input, some recurring themes appeared. And from those themes emerged a common foundation—for hardware, software, accessories, consumables and support—that's built-on:

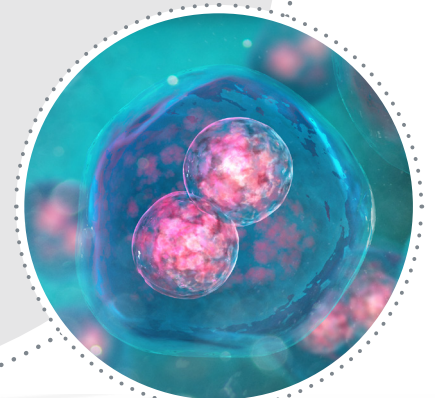
- **Simplicity**, so you can focus more on science and less on managing your tools
- **Efficiency**, to help you optimize productivity, increase walk-away time and learn more—faster
- **Adaptability**, so the technology you invest in can grow with you, not grow obsolete
- **Reliability and support**, to help maximize instrument uptime so your research is always moving forward

On that customer-driven foundation, we're building the future of laboratory automation.



The benefits of an automated workstation from Beckman Coulter Life Sciences come from more than just an instrument. They're realized thanks to synergy between:

- Hardware
- Software
- Accessories
- Consumables
- Service and support



ADVANCING SCIENCE BY ACCELERATING A **WIDE RANGE OF APPLICATIONS**

Automation drives acceleration.

This is true for pharma, biotech, academia and government-sponsored research—virtually any lab focused on genomics, cell biology, proteomics, drug discovery, forensics and related research areas.

A sampling of drug discovery and basic research application areas that can benefit from Biomek automation:

- Cell-based assays
- High-throughput screening
- High-content screening
- Cell line development
- Cell culture
- Transfection
- Continuous cell culture
- Biologic bioanalysis
- Proteomics, lipidomics, metabolomics
- Synthetic biology
- 3D cell models
- Compound handling

A sampling of genomics application areas that can benefit from Biomek automation:

- Next-generation sequencing sample prep
 - Whole genome sequencing
 - Transcriptome sequencing
 - Target/exome capture
 - Amplicon sequencing
 - Cancer panels
 - HLA typing
- Microarray sample prep
 - Genotyping
 - Gene expression
- Nucleic acid sample prep
 - DNA/RNA isolation
 - DNA/RNA clean-up
 - DNA size selection
 - Plasmid prep
- Sanger sequencing
 - Big dye clean-up
- qPCR/PCR setup

Many fields of research continue to accelerate at a rapid pace.

Our commitment is to provide the innovative technology you need to maintain that pace—by simplifying your workflows, improving efficiency, increasing walk-away time and decreasing downtime.

The most recent example of this commitment: Biomek i-Series Automated Workstations.



EXPLORE THE **BIOMEK i-SERIES AUTOMATED**

Representing the best of what has made Biomek workstations an industry leader—combined with enhancements suggested by customers around the globe—Biomek i-Series Automated Workstations have been designed to optimize dependability and walk-away time in mid- to high-throughput labs.

Simplicity so you can focus more on science

- 1 Bright, multiple color- and pattern-coded status light bar alerts you to the instrument's current mode, even from across the room.
- 2 Light Curtain provides key safety feature during operation and method development.
- 3 Internal LED light illuminates the instrument deck for easy access and monitoring of your workspace status.

Efficiency to help deliver higher productivity

- 4 Rotating gripper with unique offset finger design optimizes access to high-density decks, enabling more efficient workflows.
- 5 Linear motion control increases positional accuracy for pipetting access to high-density labware.
- 6 Large-volume, 1 mL multichannel pipetting head expedites sample transfers and enables more efficient mixing steps.



Biomek **i7** Automated Workstation

WORKSTATIONS

BIOMEK i-SERIES WORKSTATIONS ENABLE “4D INTEGRATION”

With access from 4 directions—right, left, back and below—i-Series workstations make it easy to integrate a growing menu of devices, components and accessories. Your Beckman Coulter team can help you with standard integrations.



Adaptability to extend scale and reach

- 7 Grid-based deck with simple accessory installation enables quick workflow changes.
- 8 Spacious, open-platform design enables access from all sides to enable integration of adjacent-to-deck and off-deck processing elements (e.g., analytical devices, external storage/incubation units, and labware feeders).

Trusted reliability and support to reduce downtime

- 9 Safeguard sample and reagent integrity from air particulates with enclosed versions of the Biomek i-Series Automated Workstations.
- 10 Vertical sliding door on enclosure provides front access without aisle obstruction.
- 11 Onboard cameras enable live broadcast and on-error video capture to expedite response time and system diagnosis.
- 12 Span-8 pipetting with independent probe calibration for volume transfers from 0.5 to 5,000 μL .