

ACCESSORIES TO ENABLE **YOUR APPLICATIONS**

Build a system to suit your needs. Choose the accessories you need to maximize the efficiency and reliability delivered by a Biomek i-Series Automated Workstation.

Multichannel heads

In addition to Span-8 pipetting, three multichannel head options are available:

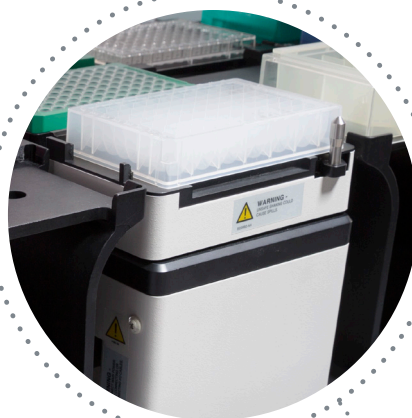
	RANGE
MC-384, 60 μ L	0.5 μ L - 60 μ L
MC-96, 300 μ L	1 μ L - 300 μ L
MC-96, 1,200 μ L	5 μ L - 1,200 μ L

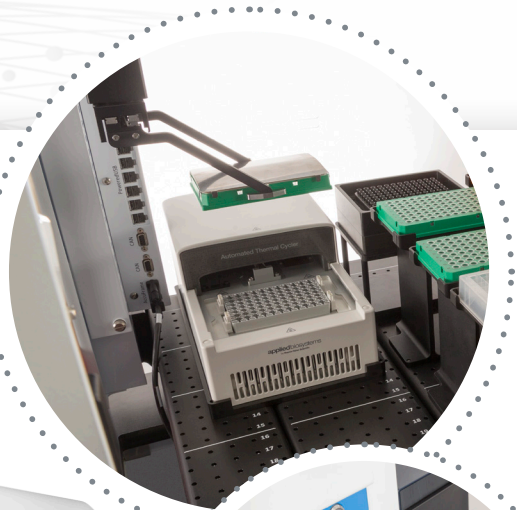
For more information on compatible tips, request a copy of Beckman Coulter's Biomek Tips and Labware catalog.

Automated Labware Positioners (ALPs)

Designed to fit seamlessly onto the deck of any Biomek workstation, ALPs from Beckman Coulter Life Sciences perform application-specific tasks, such as:

- Tip washing
- Shaking
- Heating/cooling
- Reagent reservoirs
- And a host of other options depending on your application





Device integrations and customization services

To further enhance the capabilities of your Biomek i-Series Automated Workstation, you can choose from a list of device integrations or ask for our customization services.

Your Access Solutions support team will include experts who've integrated hundreds of third-party devices to meet a large variety of workflow needs.

Additional components

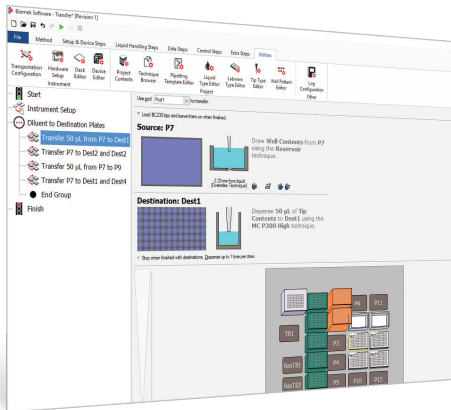
- Fly-by barcode reader for positive sample ID, process and tracking of microplates
- Labware feeders
- Instrument carts (pictured) and tables
- And a host of others depending on your specific needs



Biomek i5 Automated Workstation

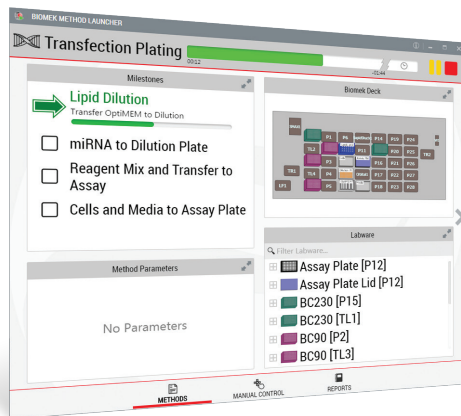
INDUSTRY-LEADING BIOMEK SOFTWARE FOR i-SERIES THAT DELIVERS WORKFLOW INTELLIGENCE

The latest version of customer-acclaimed Biomek software, Biomek i-Series software maximizes ROI by giving you unprecedented control over your liquid handler.



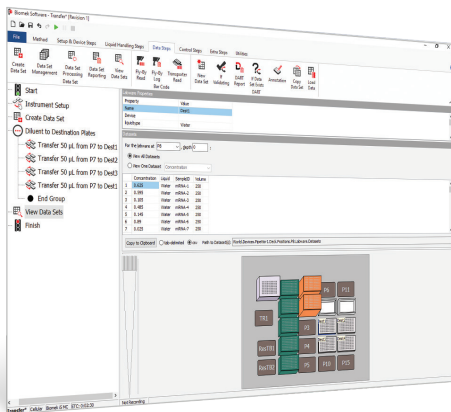
Method authoring

- Sets the standard for method authoring with a point-and-click interface; no advanced software expertise required.
- Saves time and consumables with Biomek's visual editor, which validates your method in real time as you create it, and Biomek's 3D simulator, which demonstrates exactly how your method will execute.
- Provides full control over movement of the tip in the well to match even the most complex manual pipetting motions.



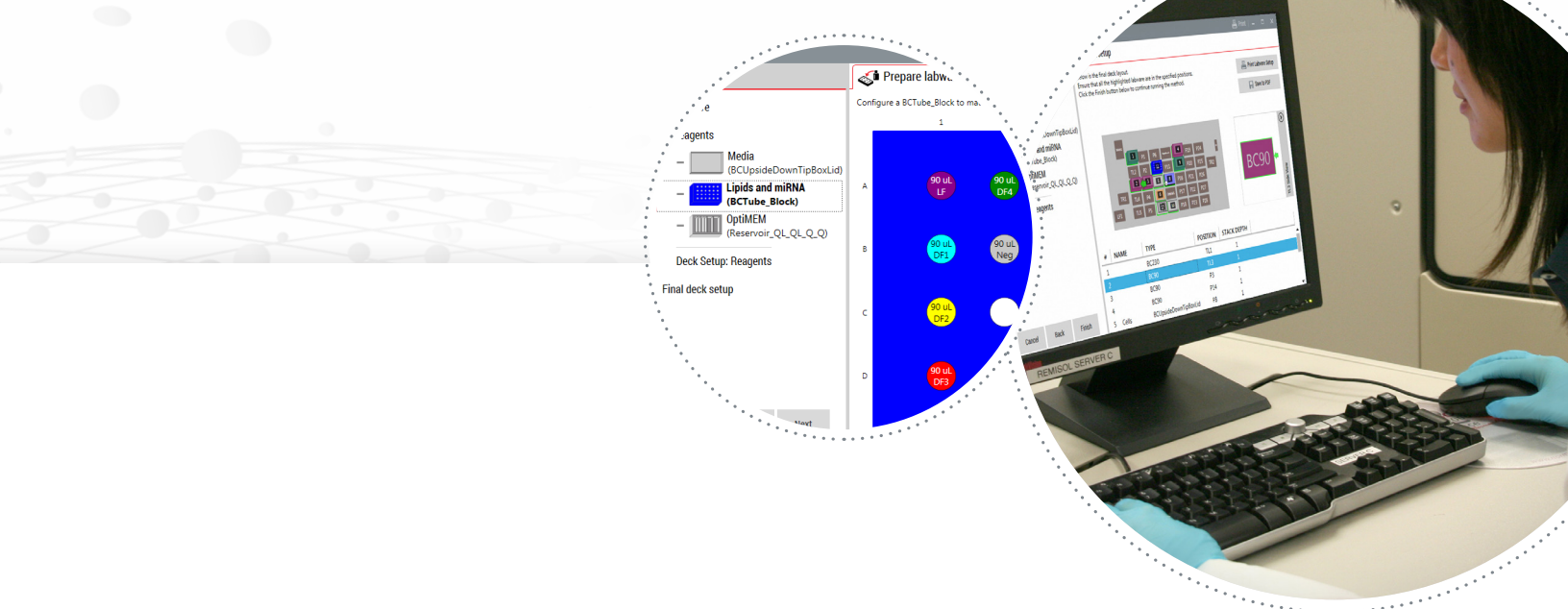
Ease of operation

- Improves accuracy and reduces errors by giving operators step-by-step guidance for placing labware on the deck.
- Makes it easy for lab technicians to launch/monitor methods by providing a simple point-and-click user interface.
- Lets you “lock down” the instrument and protect validated methods from being altered inadvertently by operators.
- Supports regulated laboratories and multi-user environments by controlling access using electronic signatures.
- Enables remote instrument monitoring using any device with a Google Chrome™ browser.



Data management

- Captures the data you need to validate your processes and help ensure reproducible results.
- Integrates with LIMS systems to import work orders and export data.
- Seamlessly transfers data between methods so you can easily generate run, labware and sample reports at any time.
- Data-driven methods select appropriate actions during execution based on sample data generated in real time.



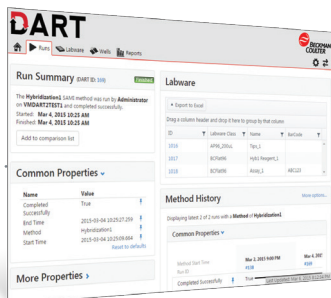
Identify deck setup errors before you start the method with DeckOptix Final Check remote monitoring system

Human error is a part of science. DeckOptix Final Check remote monitoring system analyzes the deck for common setup errors and alerts you prior to the start of a run, providing you the confidence to walkaway.



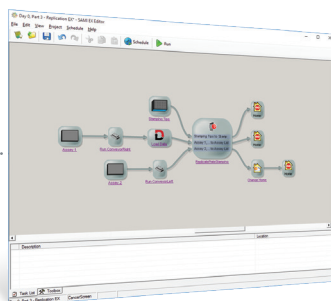
Simplify data management with DART software

Automation systems generate large quantities of data to manage. DART software simplifies workflow data by transforming it into powerful information to inform your research decisions.



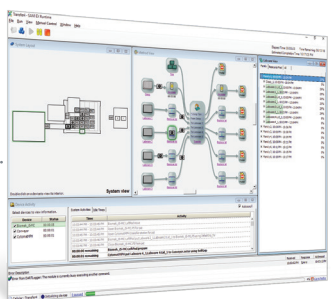
Streamline workflows with SAMI EX software

Automate full workflows with a process control supporting a wide variety of applications. Use the power of a planning scheduler and sample data drill-down to manage your assay.



Easily automate your most complex workflows with SAMI Process Management software

This calendar-format tool enables the addition, monitoring and planning of SAMI EX software methods and other events as part of user-defined processes.



BIOMEK PIPETTE TIPS: THE MOST CRITICAL POINT OF CONTACT

All Biomek workstations are optimized to perform as complete systems. That's why only Biomek pipette tips from Beckman Coulter Life Sciences are validated and approved for use with our workstations.

Biomek pipette tips, racks and rack covers are molded from premium-grade, virgin polypropylene to provide chemical resistance during sample preparation, and to ensure the highest performance and quality control for your most exacting applications.

To make setup, method writing, and operation easy and efficient, Biomek software already includes point-and-click options for Biomek tip definitions, pipetting techniques and templates, and color-coded Biomek tip racks.



Only Biomek pipette tips are validated and approved for use with Biomek workstations.



Biomek pipette tips from Beckman Coulter are certified to be:

- **RNase- and DNase-free***
Ensures high-quality nucleic acid purification and reliable nucleic acid testing results.
- **DNA-free* (human & mouse)/PCR inhibitor-free***
Confirms the absence of both human and mouse DNA contaminants that result in erroneous results and interfere with the PCR.
- **Endotoxin-free***
Addresses endotoxin-sensitive applications, such as cell transformations and preparative protocols that use extracted biological material for in vivo experimentation.
- **Trace metal-free***
Reduces chemical interference due to chelation and denaturation.

*Free means: Bio-certification "free of" claims are defined as the lower limit of detection based on the sensitivity of the test method or instrumentation used.

For more information on Biomek tips and accessories, request a copy of Beckman Coulter's Biomek Tips and Labware catalog or visit beckman.com.



WORLD-CLASS TRAINING, SERVICE AND SUPPORT ARE **INSTRUMENTAL TO SUCCESS**

From online classes or instructor-led training, to on-site application support - we're committed to doing everything possible to ensure that you can operate your Biomek workstation with confidence.

In addition, when you choose a Biomek i-Series Automated Workstation from Beckman Coulter Life Sciences, you can expect support and maintenance from an organization that's rated higher for technical support than any major competitor.

Further building on our commitment to world-class service, the DeckOptix Final Check remote monitoring system available to help maximize system uptime by shortening service calls and expediting repair times.



Instructor-led training or on-line classes help ensure that you can operate your i-Series workstation with confidence.

Our customer support center directs a team of engineers with extensive product knowledge who can troubleshoot issues quickly and efficiently.

To help maximize instrument uptime, the BeckmanConnect remote connectivity platform can use built-in cameras to show our support team a secure view of your i-Series workstation.

