



Mopec

Control Slides

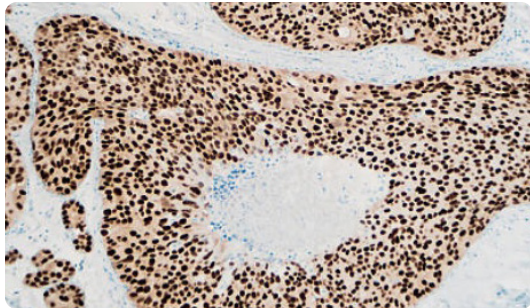
IHC | SPECIAL STAINS | NORMAL TISSUE | TMA

Mopec Control Slides

Mopec is dedicated to empowering pathology and anatomy professionals by providing a premier platform of products and solutions. Mopec Control Slides, designed on Mopec SuperWhite Adhesive Slides for FFPE human tissue, cover Special Stain, IHC, Normal Human Tissue, and Tissue Microarray (TMA), elevating diagnostic accuracy, safety, research, education, and disease treatment. Acknowledging diverse lab needs, we provide a unique option for ordering custom control slides, ensuring a precise fit to specifications.

Special Stain Control Slides

Special stains are essential for histology, as they offer detailed insight into the structure, function, and features of various cells and tissues. By using special stains, histologists can gain more precise information about the structures they are analyzing, leading to more accurate diagnoses, and improved pathology research. All positive control slides are on Mopec SuperWhite Adhesive Slides using Formalin Fixed Paraffin Embedded (FFPE) human tissue. Mopec Special Stains are available in boxes of 10, 20, and 100.

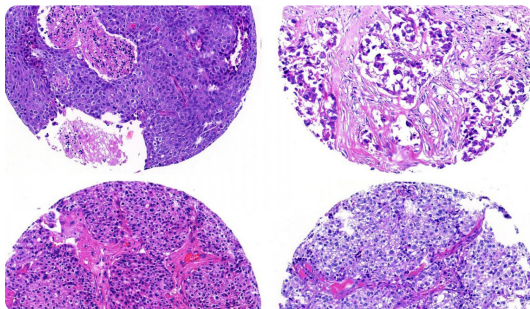
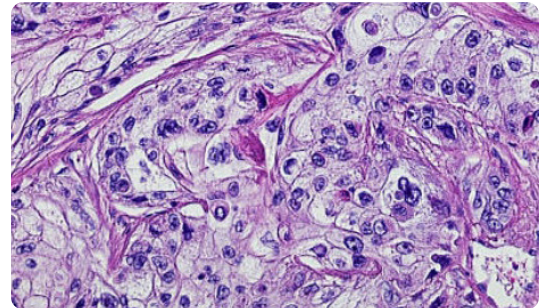


IHC Control Slides

IHC control slides play a crucial role in assessing the accuracy of the staining protocol, detecting any background staining, and determining sensitivity and specificity. The use of IHC control slides allows researchers to interpret their results with confidence, avoiding any false-positive or false-negative outcomes. All positive control slides are on Mopec SuperWhite Adhesive Slides using Formalin Fixed Paraffin Embedded (FFPE) human tissue. Mopec IHC Control Slides are available in boxes of 25 and 100.

Normal Human Tissue Control Slides

Human tissue control slides play a crucial role in maintaining the accuracy and reliability of diagnostic tests and experiments involving human tissue. They are essential quality control tools that help detect any issues related to the staining process or sample quality. All positive control slides are on Mopec SuperWhite Adhesive Slides using Formalin Fixed Paraffin Embedded (FFPE) human tissue. Mopec Normal Human Tissue Control Slides are available in boxes of 25 and 100.



Tissue Microarray Control Slides

Tissue Microarrays are used to analyze multiple individual tissue samples on one slide. Typically, one TMA control slide will contain several different specimens. TMAs can have various histological types of disease that need to be compared, or they can contain the same histological tissue type but with different behaviors. All positive control slides are on Mopec SuperWhite Adhesive Slides using Formalin Fixed Paraffin Embedded (FFPE) human tissue. Mopec Tissue Microarray Control Slides (TMAs) are available in boxes of 25.

Custom Control Slides

Mopec allows customers the option of ordering custom control slides for our histopathology and immunopathology product lines. A custom request allows you to modify any of our Mopec Control Slides to meet your lab's exact specifications. Commonly requested changes are tissue placement, drying method, and section thickness.



Explore our extensive range of control slides! Contact Mopec now to receive a comprehensive list of our complete product line.

Give us a call today at 800.362.8491.

IHC

Products				
5-HMC	CD 123	Claudin 18	KI67/DESMIN	NCAM
5-MC	CD 133	c-MYC	L26	NCR1
AAT (ALPHA-1 Antitrypsin)	CD 138	CMV	LAG3 CST	NEK6
ACTH	CD 14	Collagen I	LAMA5	Nestin
Adenovirus	CD 142	Cyclin D1	KI67/DESMIN	NeuN
Adrenergic Receptor beta 2	CD 146	COX2	L26	Neurofilament
Adrenomedullin	CD 15	CK HMW 34bE12	LAG3 CST	NF-1
AE1/AE3	CD 163	DOG1	LAMA5	NFAT
AFP	CD 172a	EBV	Lambda ISH	NfKb p50
Akt	CD 184	ECAD	Laminin	NfKb p65
Albumin IF	CD 19	EMA	LC3 A/B	NIMPR14 (Neutrophil)
Alizarin Red S	CD 1a	ESA	LCA	Nissl
ALK	CD2	Ep-CAM	LEF-1	NK Cells
AMACR P504S	CD 20	ER	Leptin Receptor	NKG2D
AMHR2	CD 200	ER alpha	Leu 7 (CD57)	NKI-C3
Amylase	CD 206	ERG	LFABP	NKX2.2
Androgen	CD 21	FAP	LH	NKX3.1
Annexin A10	CD 23	Factor VIII	LKBI	NKX6.1
Aquaporin 4	CD 24	Factor XIIIa	LKBI	NOS2
Arginase	CD 25	GATA3	LTBP1	Notch 1
Arginase-1	CD 28	GCDFF-15	LYSOZYME	Notch 2
ARIDIA	CD 3	Gastrin	LYVE1	Notch 3
AT8	CD 30	GFAP	C5b-9	NRAS
AT100	CD 303	Glypican 3	Mac-2	NSE
ATRX	CD 31	H3K27Me3	Melanoma cocktail (D1:HMBS/MART-1/ Tyrosinase)	NT5E
Aurora B	CD 32	HBME-1	Mammaglobin	Nut
Aurora Kinase 2	CD 33	HER2	MART-1	O13
Axin2	CD 34	HHV8	Maspin (SERPINB5)	OCT.2
AXL	CD 35	HIF-1 alpha	MAX	CS1-OCT3/4
B72.3	CD 38	HNFlb	MCL-1	Olig 2
BAP-1	CD 4	H Pylori	MCPyV	Osteoprotegerin (OPG)
BAX	CD 41	HLA CLASS 1	MCV 203	OVCA1(DPH1)
BCL 1	CD 43	HMB45	MDM2	OX40 (CD134)
BCL 2	CD 44	HSA	Melan A	P120
BCL 6	CD 45	HSV Type 1	Melatonin Receptor	P130
BCL 9	CD 47	HSV Type 2	Merlin	P16
BCOR	CD 49B	HPV low-risk	Met	P21
BerEp4	CD 5	HPV high-risk	METTL3	P27
BerH2	CD 56	HuC-HuD neuronal protein	MGMT	P2Y2
Beta Amyloid	CD 62-P	human Chorionic Gonadotropin	MIB1	P40
Beta Catenin	CD 68	Hyaluronidase	MHCA/B	P504S
Beta-2 Microglobulin (B2M)	CD 69	HYDROXYLASE	MITF	P53
Beta-FGF	CD 7	ICAM-1	MLH-1	P57
B-HCG	CD71 (transferrin receptor)	ICOS	MMP9	P62
BIM	CD 79a	IDH1/2 (R132H)	MMP17	P63
BMP 10	CD 8	IDH1 WT	MOC31	pAKT
BMP 9	CD 80	IDH2 WT	MPO	Pan Keratin
Bodian	CD 86 (B7-2)	IDO	MSA	Parafibrin
Brachyary	CD 87	IFITM1	MSH2	Parathyroid Hormone PTH
BRAF V600E	CD 90	IgA	MSH6	PAX-2
BRCA 1	CD 99	Ig D	MTDH	PAX-5
BrdU	CD 117	Ig E	MTNR1B	PAX-6
CIQ	CDK4	IGF1R	MUC1 (CD227)	PAX-8
C3	CDK6	IgG	MUC16 (CA-125)	PAX8R1
CA19.9	CDX-2	IgM	MUC-2	PCNA
CAIX	CEA	IL6	MUC4	PD-1
Calcitonin	CEA Poly	IL-9	MUC5AC	PDGFRA
Caldesmon	CEACAM1	IL-10	MUC-6	PD-L1 (LUNG)
Calponin	Chromogranin A (CgA)	Inhibin	MUC7	PD-L2
Calretinin	Chymase	INI-1	MUMIP (IRF4)	PDX-1
CAM 5.2	CIT	iNOS	Musashi-1	Pepsinogen
CAMTA1	CITED1	INPP4B	MYB	Perforin
Caspase 3	CK 5/6	Insulin Receptor	MYC	PGP9.5
Cathepsin	CK 14	Involucrin	MYOD1	PHH3
Cathepsin K	CK 19	Islet-1	MYOGENIN	Phospho EGFR
CCN2	CK 20	ITM2A	Myosin	PHOX2B
CCNB3	CK 5	Jagged1	Nanog	PIN4 34E12/P63/AMACR
CD 10	CK 7	Kappa	Napsin A	PIT-1
CD 105	CK 8	Ki-67	NB84	PLAG-1
CD 11b	CK 8/18 LMW	Ki-67 MIB-1	N-Cadherin	PLAP

SPECIAL STAIN

Products
Acid fast bacteria; Ziehl-Neelsen stain
amyloid; Congo red stain
Alcian blue
acid mucins; Alcian blue/PAS
Argyrophil
bile; Hall's Bilirubin Stain
Candida sp.; GMS
calcium; Von Kossa stain
copper; Rhodamine stain
elastin; Verhoeff stain
Acid fast bacilli; Fite stain
Gram+ stain
Giemsa stain
Giemsa stain
Helico Bacteria; (pylori HP); Field's Stain (rapid test); Warthin-Starry stain
Aspergillus; GMS
hepatitis B; Orcein stain
Iron (ferric) deposit at a moderate to high level; Gomori Prussian Blue
Iron (ferric) deposit at a low to moderate level; Gomori Prussian Blue
Iron (colloidal); Mowry's stain
mast cells; Toluidine Blue
Melanin; Argentaffin, fontana-masson stain
Movat-Russell Pentachrome
Mucin; Mucicarmine
Liver Tissue with fungus - Periodic Acid Schiff
Liver & No fungus - Periodic Acid Schiff
Periodic Acid Schiff with digestion; PAS diastase stain (PAS-D)
Striations; phosphotungstic acid hematoxylin stain
pneumocystis; GMS
Steiner-Steiner stain
spirochete
Reticulin; Snook's stain
trichrome; Masson's stain
M. leprae bacteria
Warthin-Starry stain
Luxol Fast Blue
M. tuberculosis; Ziehl-Neelsen
Brain; Bielschowsky stain
May-Grünwald Stain
amyloid; Crystal violet stain
Safranin-O, cartilage

NORMAL HUMAN TISSUE

Products
Human Aorta
Human Artery
Human Heart
Human Esophagus
Human Appendix
Human Gall Bladder
Human Stomach
Human Small intestine, duodenum
Human Small intestine, ileum
Human Small intestine
Human Intestine, colon
Human Liver
Human Pancreas
Human salivary gland
Human Adrenal gland
Human Lymph Nodes
Human Pineal Gland
Human Pituitary
Human Spleen
Human Thyroid
Human Thymsus
Human Tonsil
Human Elastic cartilage
Human fibrocartilage
Human Hyaline cartilage
Human Muscle (skeletal)
Human Tendon
Human Adipose
Human Skin
Human Brain
Human cerebellum
Human Nerve
Human medullated nerve
Human Spinal Cord
Human Spinal ganglion
Human Breast
Human Cervix
Human Fallopian Tubes
Human Foreskin
Human Ovary
Human Placenta
Human Prostate
Human Testis
Human Umbilical Cord
Human Uterus
Human Vas Deferens
Human Lung
Human Trachea
Human Bladder
Human Kidney
Human Ureter

TMA

Products
Breast Tumors
Breast Cancer and Normal Adjacent Tissue
Normal human tissue - Liver
Normal human tissue - Lung
Normal human tissue - Kidney
Normal human tissue - Colon
Normal human tissue - Tonsil
Normal human tissue - Skin
Normal human tissue - Prostate
Normal human tissue - Breast
Normal human tissue - Lymph node
Normal human tissue - Uterus
Normal human tissue - Testis
Normal human tissue - Placenta
Normal human tissue - Thyroid
Normal human tissue - Stomach
Normal human tissue - Pancreas
Normal human tissue - Spleen



Why choose Mopec?

Mopec is elevating pathology with the most advanced platform of equipment and supplies for an integrated ecosystem to optimize pathology workflows, specimen tracking, and user safety.

Elevating Pathology

At Mopec, we're not just supplying equipment; we're raising the standard of care in laboratories.

Advanced & Configurable Platform

A suite of solutions that adapts to your lab's needs. Our advanced platform is as flexible as it is powerful, designed to grow with your lab.

Integrated Ecosystem

Our equipment is designed for integration of ancillary equipment and is the launching point for digital pathology tools and AI assistance.

Optimized Pathology Workflows

Our tools are tailored to streamline your lab's workflow, cutting through complexity to deliver a smoother, faster, and more reliable grossing process.

Improved Specimen Tracking

With the integration of tools for on-demand cassette printing, digital photography, and AI, you can track every specimen with unmatched precision.

Ensure User Safety

Our equipment meets the highest safety standards, protecting users from formalin exposure and workplace injuries as they advance the field of pathology.

