

lumohs

LIGHT THE SITE™



AVAILABLE FROM

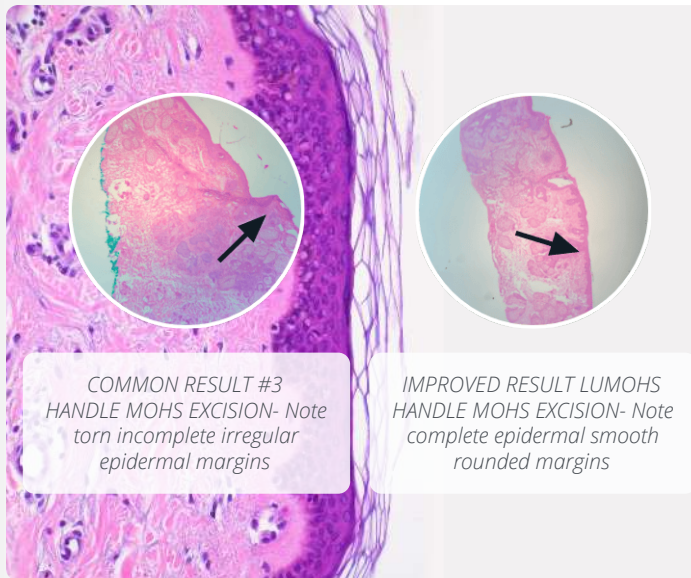


LEARN MORE AT [MOPEC.COM/LUMOHS](https://www.mopec.com/lumohs)

Precision Based Illumination

Mere millimeters away from the surgical site, precisely situated beyond the reach of overhead surgical lighting. Uninterrupted, shadow-free illumination for the perineum, genitalia, ears, scalp, and other areas. Improved visibility during incisions near nerves and vessels within anatomically sensitive zones.

"Every Artist has more than one paint brush, every mechanic more than one tool, but if a surgeon had only one instrument, Lumohs would be it"



COMMON RESULT #3
HANDLE MOHS EXCISION- Note
torn incomplete irregular
epidermal margins

IMPROVED RESULT LUMOHS
HANDLE MOHS EXCISION- Note
complete epidermal smooth
rounded margins

Reduce Risk of Inadvertent Surgical Mistakes

Mitigate potential risks associated with autopsy procedures when navigating challenging or hard-to-see areas during cutting. Alleviate strain on surgeons' necks and backs while enhancing visibility at the surgical site. The broad, rounded grip minimizes hand strain and fatigue, facilitating smooth, synchronized handle rotation during cutting.

Affordable & Reusable

Revolutionize your surgical toolkit with our innovative solution featuring a cost-effective, replaceable battery cartridge. The portable #3 handle is universally compatible with #6-16 blades, including #10R, #10, #11, #12, and #15 blades. The #4 Scalpel Handle fits #18 - #27 blades, and the #8 Scalpel Handle accommodates #60 - #70 blades. This versatile, autoclavable tool offers seamless adaptability and a budget-friendly option, eliminating the need for expensive surgical lighting systems. Elevate your procedures with efficiency and affordability.



**ORDER THE LUMOHS LIGHTED
SCALPEL HANDLES TODAY!**

MOPEC.COM/LUMOHS

AVAILABLE FROM
Mopec